

SCGN Rabbit Polyclonal Antibody



CAB12897

Product Information

Size:

20uL, 50uL, 100uL, 200uL

Observed MW:

27kDa

Calculated MW:

32kDa

Applications:

WB IHC IF

Reactivity:

Human, Mouse, Rat

Protein Background

The encoded protein is a secreted calcium-binding protein which is found in the cytoplasm. It is related to calbindin D-28K and calretinin. This protein is thought to be involved in KCL-stimulated calcium flux and cell proliferation.

Immunogen information

Gene ID:

10590

Uniprot

O76038

Synonyms:

SCGN; CALBL; DJ501N12.8; SECRET; SEGN; setagin

Antibody Information

Recommended dilutions:

WB 1:500 - 1:2000 IHC 1:50
- 1:200 IF 1:50 - 1:200

Source:

Rabbit

Isotype:

IgG

Purification:

Affinity purification

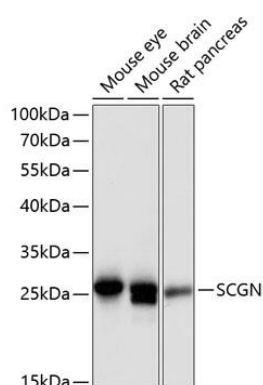
Immunogen:

Recombinant fusion protein containing a sequence corresponding to amino acids 1-276 of human SCGN (NP_008929.2).

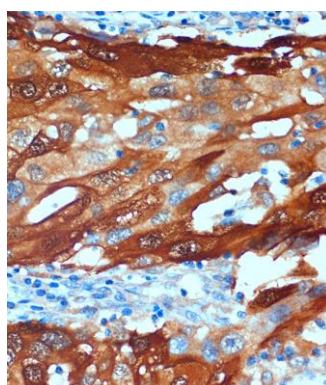
Storage:

Store at -20°C. Avoid freeze / thaw cycles. Buffer: PBS with 0.02% sodium azide, 50% glycerol, pH7.3.

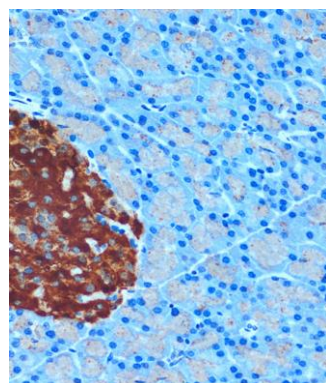
Product Images



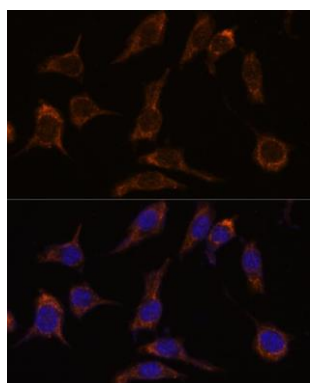
Western blot analysis of extracts of various cell lines, using SCGN antibody (CAB12897) at 1:3000 dilution. Secondary antibody: HRP Goat Anti-Rabbit IgG (H+L) (CABS014) at 1:10000 dilution. Lysates/proteins: 25ug per lane. Blocking buffer: 3% nonfat dry milk in TBST. Detection: ECL Basic Kit (CABM00020). Exposure time: 90s.



Immunohistochemistry of paraffin-embedded Human breast cancer using SCGN Rabbit pAb (CAB12897) at dilution of 1:100 (40x lens).



Immunohistochemistry of paraffin-embedded Rat pancreas using SCGN Rabbit pAb (CAB12897) at dilution of 1:100 (40x lens).



Immunofluorescence analysis of L929 cells using SCGN antibody (CAB12897) at dilution of 1:100. Blue: DAPI for nuclear staining.