

# LTF Rabbit Polyclonal Antibody



CAB12902

## Product Information

### Size:

20uL, 50uL, 100uL, 200uL

### Observed MW:

78kDa

### Calculated MW:

73kDa/78kDa

### Applications:

WB IHC

### Reactivity:

Human, Mouse, Rat

## Antibody Information

### Recommended dilutions:

WB 1:500 - 1:2000 IHC

1:100 - 1:200

### Source:

Rabbit

### Isotype:

IgG

### Purification:

Affinity purification

## Protein Background

This gene is a member of the transferrin family of genes and its protein product is found in the secondary granules of neutrophils. The protein is a major iron-binding protein in milk and body secretions with an antimicrobial activity, making it an important component of the non-specific immune system. The protein demonstrates a broad spectrum of properties, including regulation of iron homeostasis, host defense against a broad range of microbial infections, anti-inflammatory activity, regulation of cellular growth and differentiation and protection against cancer development and metastasis. Antimicrobial, antiviral, antifungal and antiparasitic activity has been found for this protein and its peptides. Alternatively spliced transcript variants encoding different isoforms have been found for this gene.

## Immunogen information

### Gene ID:

4057

### Uniprot

P02788

### Synonyms:

LTF; GIG12; HEL110; HLF2; LF

### Immunogen:

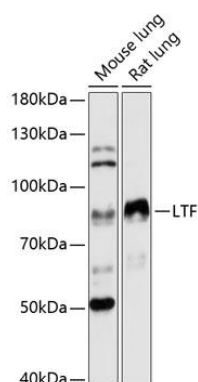
Recombinant fusion protein containing a sequence corresponding to amino acids 500-710 of human LTF (NP\_002334.2).

### Storage:

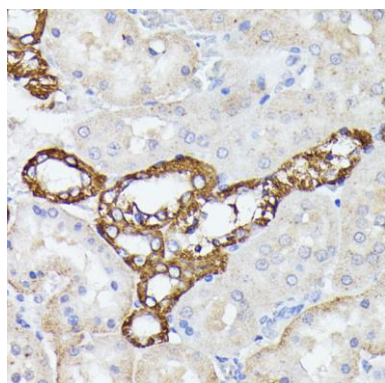
Store at -20°C. Avoid freeze / thaw cycles. Buffer: PBS with 0.02% sodium azide, 50% glycerol, pH7.3.

## Product Images

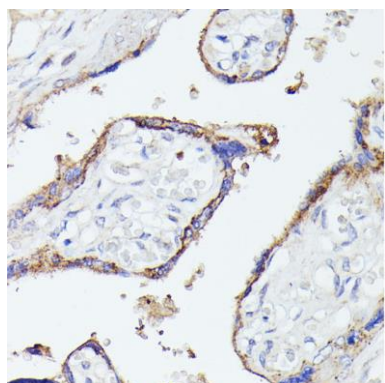
---



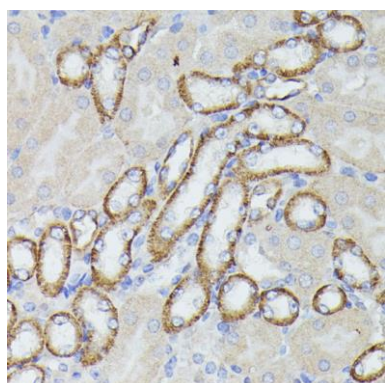
Western blot analysis of extracts of various cell lines, using LTF antibody (CAB12902) at 1:3000 dilution. Secondary antibody: HRP Goat Anti-Rabbit IgG (H+L) (CABS014) at 1:10000 dilution. Lysates/proteins: 25ug per lane. Blocking buffer: 3% nonfat dry milk in TBST. Detection: ECL Basic Kit (CABM00020). Exposure time: 60s.



Immunohistochemistry of paraffin-embedded rat kidney using LTF antibody (CAB12902) at dilution of 1:100 (40x lens).



Immunohistochemistry of paraffin-embedded human placenta using LTF antibody (CAB12902) at dilution of 1:100 (40x lens).



Immunohistochemistry of paraffin-embedded mouse kidney using LTF antibody (CAB12902) at dilution of 1:100 (40x lens).