

# RUSC2 Rabbit Polyclonal Antibody



CAB12904

---

## Product Information

### Size:

20uL, 50uL, 100uL, 200uL

### Observed MW:

161kDa

### Calculated MW:

161kDa

### Applications:

WB

### Reactivity:

Rat

## Protein Background

This gene encodes a RUN and SH3 domain containing protein that interacts with Rab1b and Rab1-binding protein GM130. Alternatively spliced transcript variants have been observed for this gene.

## Immunogen information

### Gene ID:

9853

### Uniprot

Q8N2Y8

### Synonyms:

RUSC2; Iporin; iporin

## Antibody Information

### Recommended dilutions:

WB 1:1000 - 1:2000

### Source:

Rabbit

### Isotype:

IgG

### Purification:

Affinity purification

### Immunogen:

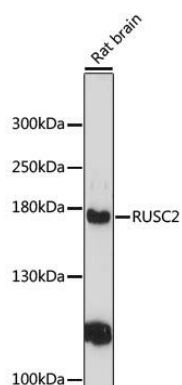
Recombinant fusion protein containing a sequence corresponding to amino acids 1217-1516 of human RUSC2 (NP\_055621.1).

### Storage:

Store at -20°C. Avoid freeze / thaw cycles. Buffer: PBS with 0.02% sodium azide, 50% glycerol, pH7.3.

## Product Images

---



Western blot analysis of extracts of rat brain, using RUSC2 antibody (CAB12904) at 1:3000 dilution. Secondary antibody: HRP Goat Anti-Rabbit IgG (H+L) (CABS014) at 1:10000 dilution. Lysates/proteins: 25ug per lane. Blocking buffer: 3% nonfat dry milk in TBST. Detection: ECL Enhanced Kit (CABM00021). Exposure time: 90s.