

IFNL3 Rabbit Polyclonal Antibody



CAB12908

Product Information

Size:

20uL, 50uL, 100uL, 200uL

Observed MW:

Calculated MW:

21kDa

Applications:

IHC IF

Reactivity:

Human, Mouse, Rat

Antibody Information

Recommended dilutions:

IHC 1:50 - 1:200 IF 1:50 - 1:200

Source:

Rabbit

Isotype:

IgG

Purification:

Affinity purification

Protein Background

This gene encodes a cytokine distantly related to type I interferons and the IL-10 family. This gene, interleukin 28A (IL28A), and interleukin 29 (IL29) are three closely related cytokine genes that form a cytokine gene cluster on a chromosomal region mapped to 19q13. Expression of the cytokines encoded by the three genes can be induced by viral infection. All three cytokines have been shown to interact with a heterodimeric class II cytokine receptor that consists of interleukin 10 receptor, beta (IL10RB) and interleukin 28 receptor, alpha (IL28RA).

Immunogen information

Gene ID:

282617

Uniprot

Q8IZI9

Synonyms:

IFNL3; IFN-lambda-3; IFN-lambda-4; IL-28B; IL-28C; IL28B; IL28C

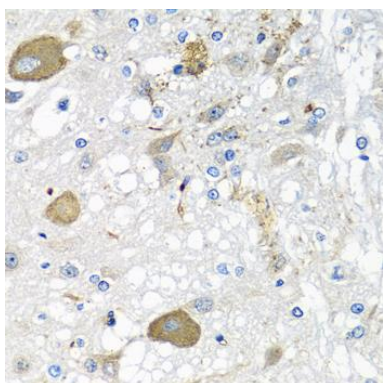
Immunogen:

Recombinant fusion protein containing a sequence corresponding to amino acids 22-196 of human IFNL3 (NP_742151.2).

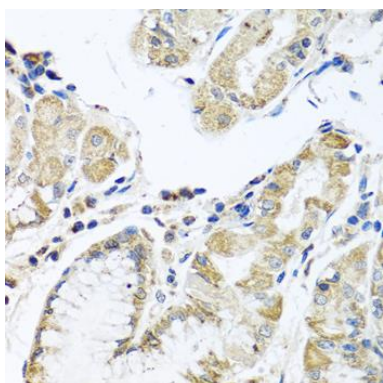
Storage:

Store at -20°C. Avoid freeze / thaw cycles. Buffer: PBS with 0.02% sodium azide, 50% glycerol, pH7.3.

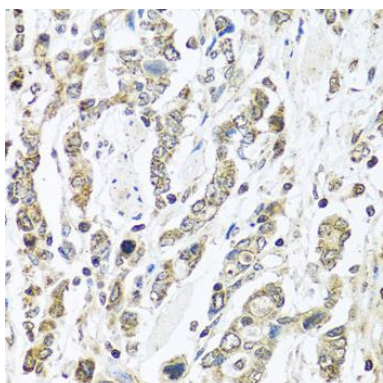
Product Images



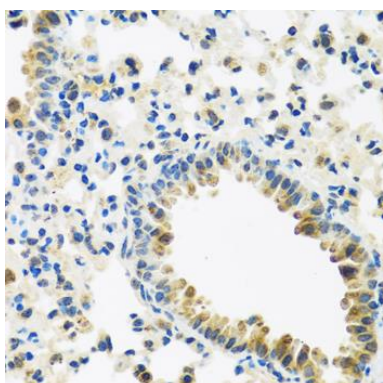
Immunohistochemistry of paraffin-embedded rat brain using IFNL3 antibody (CAB12908) at dilution of 1:100 (40x lens).



Immunohistochemistry of paraffin-embedded human stomach using IFNL3 antibody (CAB12908) at dilution of 1:100 (40x lens).



Immunohistochemistry of paraffin-embedded human gastric cancer using IFNL3 antibody (CAB12908) at dilution of 1:100 (40x lens).



Immunohistochemistry of paraffin-embedded mouse lung using IFNL3 antibody (CAB12908) at dilution of 1:100 (40x lens).