

# CLDN4 Rabbit Polyclonal Antibody



CAB12912

---

## Product Information

### Size:

20uL, 50uL, 100uL, 200uL

### Observed MW:

22kDa

### Calculated MW:

22kDa

### Applications:

WB IHC

### Reactivity:

Human

## Protein Background

The protein encoded by this intronless gene belongs to the claudin family. Claudins are integral membrane proteins that are components of the epithelial cell tight junctions, which regulate movement of solutes and ions through the paracellular space. This protein is a high-affinity receptor for Clostridium perfringens enterotoxin (CPE) and may play a role in internal organ development and function during pre- and postnatal life. This gene is deleted in Williams-Beuren syndrome, a neurodevelopmental disorder affecting multiple systems.

## Immunogen information

### Gene ID:

1364

### Uniprot

O14493

### Synonyms:

CLDN4; CPE-R; CPER; CPETR; CPETR1; WBSCR8; hCPE-R; claudin-4

## Antibody Information

### Recommended dilutions:

WB 1:500 - 1:1000 IHC 1:50 - 1:100

### Source:

Rabbit

### Isotype:

IgG

### Purification:

Affinity purification

### Immunogen:

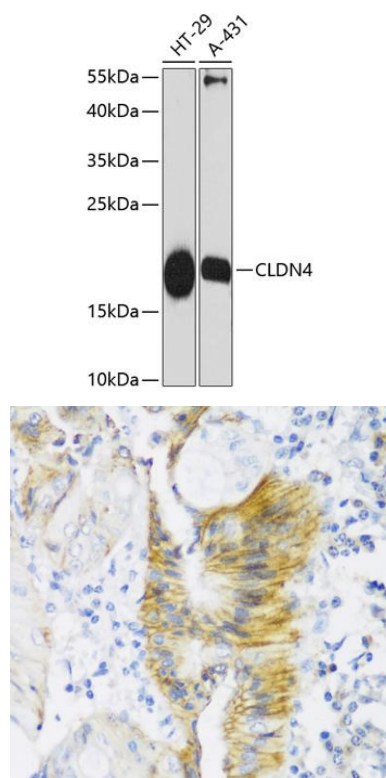
A synthetic peptide corresponding to a sequence within amino acids 100 to the C-terminus of human CLDN4 (NP\_001296.1).

### Storage:

Store at -20°C. Avoid freeze / thaw cycles. Buffer: PBS with 0.02% sodium azide, 50% glycerol, pH7.3.

## Product Images

---



Western blot analysis of extracts of various cell lines, using CLDN4 antibody (CAB12912) at 1:3000 dilution. Secondary antibody: HRP Goat Anti-Rabbit IgG (H+L) (CABS014) at 1:10000 dilution. Lysates/proteins: 25ug per lane. Blocking buffer: 3% nonfat dry milk in TBST. Detection: ECL Enhanced Kit (CABM00021). Exposure time: 90s.

Immunohistochemistry of paraffin-embedded human colon carcinoma using CLDN4 antibody (CAB12912) at dilution of 1:150 (40x lens).