

CLU Rabbit Polyclonal Antibody



CAB12913

Product Information

Size:

20uL, 50uL, 100uL, 200uL

Observed MW:

37-40KDa

Calculated MW:

32kDa/48kDa/52kDa/53kDa/
57kDa

Applications:

WB IHC

Reactivity:

Human, Mouse, Rat

Protein Background

The protein encoded by this gene is a secreted chaperone that can under some stress conditions also be found in the cell cytosol. It has been suggested to be involved in several basic biological events such as cell death, tumor progression, and neurodegenerative disorders. Alternate splicing results in both coding and non-coding variants.

Immunogen information

Gene ID:

1191

Uniprot

P10909

Synonyms:

CLU; AAG4; APO-J; APOJ; CLI; CLU1; CLU2; KUB1; NA1/NA2; SGP-2;
SGP2; SP-40; TRPM-2; TRPM2; clusterin

Antibody Information

Recommended dilutions:

WB 1:500 - 1:2000 IHC 1:50
- 1:200

Source:

Rabbit

Isotype:

IgG

Purification:

Affinity purification

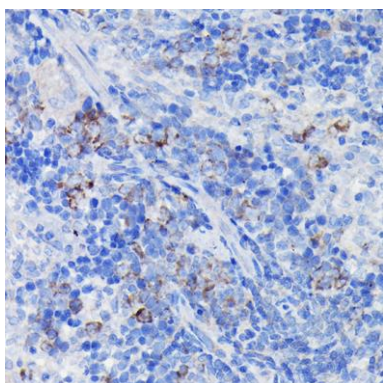
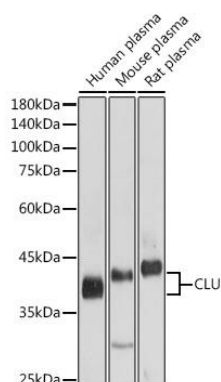
Immunogen:

Recombinant fusion protein containing a sequence corresponding to amino acids 23-120 of human CLU (NP_001822.3).

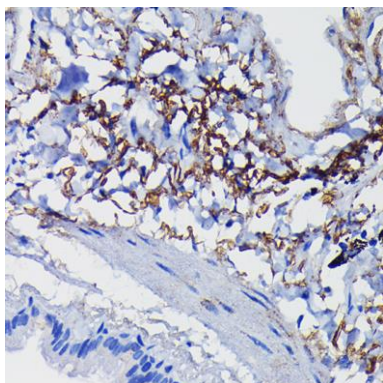
Storage:

Store at -20°C. Avoid freeze / thaw cycles. Buffer: PBS with 0.02% sodium azide, 50% glycerol, pH7.3.

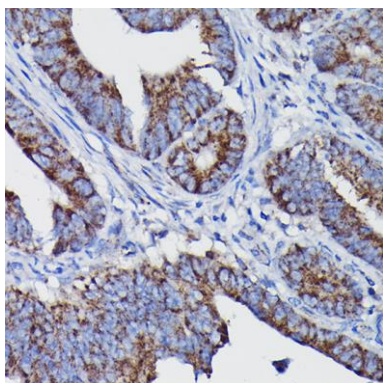
Product Images



Immunohistochemistry of paraffin-embedded rat spleen using CLU Rabbit pAb (CAB12913) at dilution of 1:100 (40x lens).



Immunohistochemistry of paraffin-embedded human lung using CLU Rabbit pAb (CAB12913) at dilution of 1:100 (40x lens).



Immunohistochemistry of paraffin-embedded human colon carcinoma using CLU Rabbit pAb (CAB12913) at dilution of 1:100 (40x lens).