

Fibronectin Rabbit Polyclonal Antibody



CAB12932

Product Information

Size:

20uL, 50uL, 100uL, 200uL

Observed MW:

272kDa

Calculated MW:

71-73kDa/221-272kDa

Applications:

WB IHC IF

Reactivity:

Human, Mouse, Rat

Antibody Information

Recommended dilutions:

WB 1:500 - 1:1000 IHC 1:50
- 1:200 IF 1:50 - 1:200

Source:

Rabbit

Isotype:

IgG

Purification:

Affinity purification

Protein Background

This gene encodes fibronectin, a glycoprotein present in a soluble dimeric form in plasma, and in a dimeric or multimeric form at the cell surface and in extracellular matrix. The encoded preprotein is proteolytically processed to generate the mature protein. Fibronectin is involved in cell adhesion and migration processes including embryogenesis, wound healing, blood coagulation, host defense, and metastasis. The gene has three regions subject to alternative splicing, with the potential to produce 20 different transcript variants, at least one of which encodes an isoform that undergoes proteolytic processing. The full-length nature of some variants has not been determined.

Immunogen information

Gene ID:

2335

Uniprot

P02751

Synonyms:

FN1; CIG; ED-B; FINC; FN; FNZ; GFND; GFND2; LETS; MSF;
fibronectin

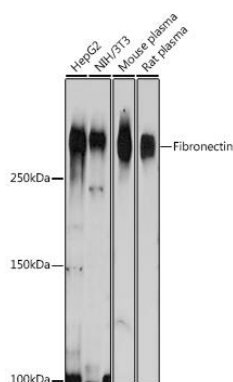
Immunogen:

Recombinant fusion protein containing a sequence corresponding to amino acids 2200-2355 of human Fibronectin (NP_002017.1).

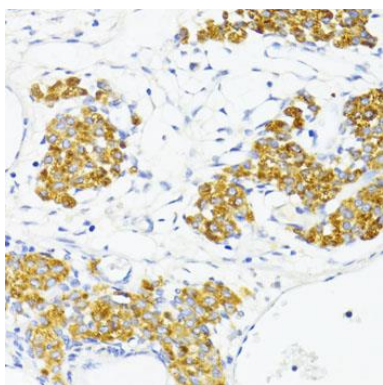
Storage:

Store at -20°C. Avoid freeze / thaw cycles. Buffer: PBS with 0.02% sodium azide, 50% glycerol, pH7.3.

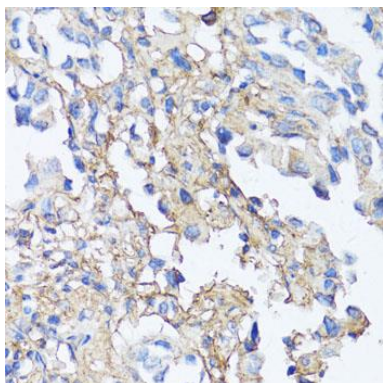
Product Images



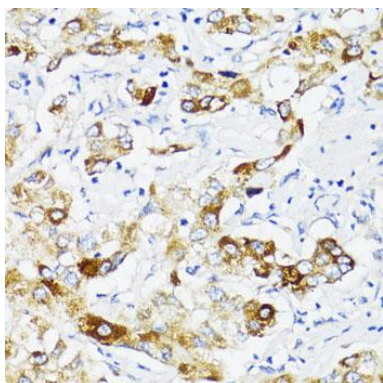
Western blot analysis of extracts of various cell lines, using Fibronectin Rabbit pAb (CAB12932) at 1:1000 dilution. Secondary antibody: HRP Goat Anti-Rabbit IgG (H+L) (CABS014) at 1:10000 dilution. Lysates/proteins: 25ug per lane. Blocking buffer: 3% nonfat dry milk in TBST. Detection: ECL Basic Kit (CABM00020). Exposure time: 10s.



Immunohistochemistry of paraffin-embedded rat ovary using Fibronectin antibody (CAB12932) at dilution of 1:100 (40x lens).



Immunohistochemistry of paraffin-embedded human lung cancer using Fibronectin antibody (CAB12932) at dilution of 1:150 (40x lens).



Immunohistochemistry of paraffin-embedded human liver cancer using Fibronectin antibody (CAB12932) at dilution of 1:100 (40x lens).