

MTCH2 Rabbit Polyclonal Antibody



CAB12934

Product Information

Size:

20uL, 50uL, 100uL, 200uL

Observed MW:

33kDa

Calculated MW:

33kDa

Applications:

WB IHC IF

Reactivity:

Human, Mouse

Antibody Information

Recommended dilutions:

WB 1:1000 - 1:3000 IHC
1:50 - 1:200 IF 1:50 - 1:200

Source:

Rabbit

Isotype:

IgG

Purification:

Affinity purification

Protein Background

This gene encodes a member of the SLC25 family of nuclear-encoded transporters that are localized in the inner mitochondrial membrane. Members of this superfamily are involved in many metabolic pathways and cell functions. Genome-wide association studies in human have identified single-nucleotide polymorphisms in several loci associated with obesity. This gene is one such locus, which is highly expressed in white adipose tissue and adipocytes, and thought to play a regulatory role in adipocyte differentiation and biology. Alternatively spliced transcript variants encoding different isoforms have been found for this gene. A recent study showed this gene to be an authentic stop codon readthrough target, and that its mRNA can give rise to an additional C-terminally extended isoform by use of an alternative in-frame translation termination codon.

Immunogen information

Gene ID:

23788

Uniprot

Q9Y6C9

Synonyms:

MTCH2; HSPC032; MIMP; SLC25A50

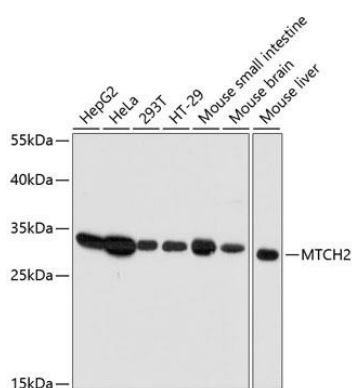
Immunogen:

Recombinant fusion protein containing a sequence corresponding to amino acids 30-175 of human MTCH2 (NP_055157.1).

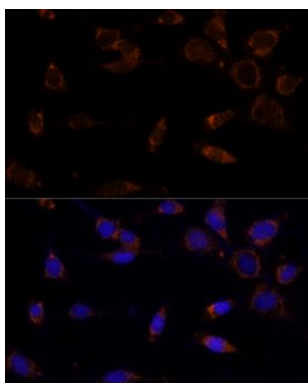
Storage:

Store at -20°C. Avoid freeze / thaw cycles. Buffer: PBS with 0.02% sodium azide, 50% glycerol, pH7.3.

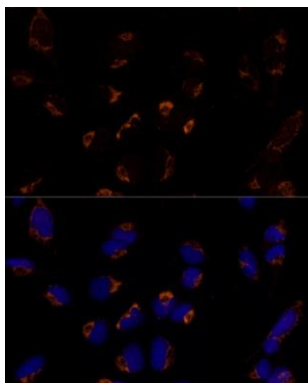
Product Images



Western blot analysis of extracts of various cell lines, using MTCH2 antibody (CAB12934) at 1:3000 dilution. Secondary antibody: HRP Goat Anti-Rabbit IgG (H+L) (CABS014) at 1:10000 dilution. Lysates/proteins: 25ug per lane. Blocking buffer: 3% nonfat dry milk in TBST. Detection: ECL Basic Kit (CABM00020). Exposure time: 30s.



Immunofluorescence analysis of NIH-3T3 cells using MTCH2 Polyclonal Antibody (CAB12934) at dilution of 1:100 (40x lens). Blue: DAPI for nuclear staining.



Immunofluorescence analysis of U-2 OS cells using MTCH2 Polyclonal Antibody (CAB12934) at dilution of 1:100 (40x lens). Blue: DAPI for nuclear staining.