

# CDK7 Rabbit Polyclonal Antibody



CAB12942

## Product Information

### Size:

20uL, 50uL, 100uL, 200uL

### Observed MW:

39kDa

### Calculated MW:

39kDa

### Applications:

WB IHC IF

### Reactivity:

Human, Mouse, Rat

## Protein Background

The protein encoded by this gene is a member of the cyclin-dependent protein kinase (CDK) family. CDK family members are highly similar to the gene products of *Saccharomyces cerevisiae cdc28*, and *Schizosaccharomyces pombe cdc2*, and are known to be important regulators of cell cycle progression. This protein forms a trimeric complex with cyclin H and MAT1, which functions as a Cdk-activating kinase (CAK). It is an essential component of the transcription factor TFIIH, that is involved in transcription initiation and DNA repair. This protein is thought to serve as a direct link between the regulation of transcription and the cell cycle.

## Immunogen information

### Gene ID:

1022

### Uniprot

P50613

### Synonyms:

CDK7; CAK; CAK1; CDKN7; HCAK; MO15; STK1; p39MO15

## Antibody Information

### Recommended dilutions:

WB 1:500 - 1:2000 IHC 1:50  
- 1:200 IF 1:50 - 1:200

### Source:

Rabbit

### Isotype:

IgG

### Purification:

Affinity purification

### Immunogen:

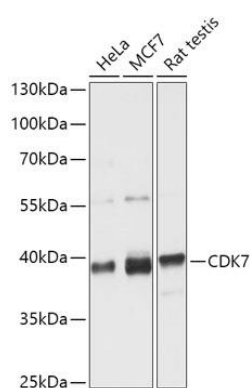
Recombinant fusion protein containing a sequence corresponding to amino acids 211-346 of human CDK7 (NP\_001790.1).

### Storage:

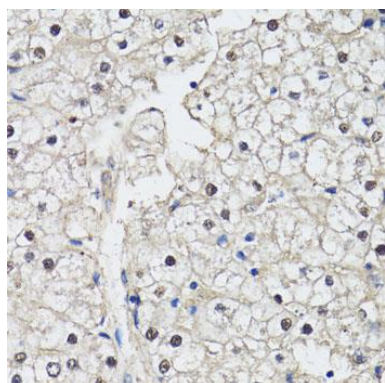
Store at -20°C. Avoid freeze / thaw cycles. Buffer: PBS with 0.02% sodium azide, 50% glycerol, pH7.3.

## Product Images

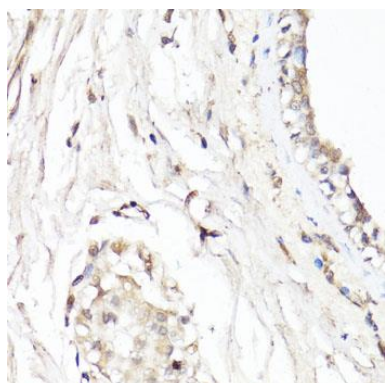
---



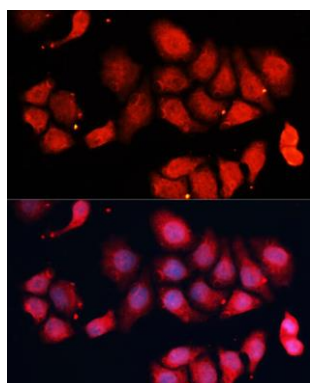
Western blot analysis of extracts of various cell lines, using CDK7 antibody (CAB12942) at 1:1000 dilution. Secondary antibody: HRP Goat Anti-Rabbit IgG (H+L) (CABS014) at 1:10000 dilution. Lysates/proteins: 25ug per lane. Blocking buffer: 3% nonfat dry milk in TBST. Detection: ECL Basic Kit (CABM00020). Exposure time: 15s.



Immunohistochemistry of paraffin-embedded human liver using CDK7 antibody (CAB12942) at dilution of 1:150 (40x lens).



Immunohistochemistry of paraffin-embedded human breast using CDK7 antibody (CAB12942) at dilution of 1:150 (40x lens).



Immunofluorescence analysis of HeLa cells using CDK7 Polyclonal Antibody (CAB12942) at dilution of 1:100 (40x lens). Blue: DAPI for nuclear staining.