

SEPT5 Rabbit Polyclonal Antibody



CAB12953

Product Information

Size:

20uL, 50uL, 100uL, 200uL

Observed MW:

43kDa

Calculated MW:

39kDa/42kDa

Applications:

WB IHC IF

Reactivity:

Human, Mouse, Rat

Protein Background

This gene is a member of the septin gene family of nucleotide binding proteins, originally described in yeast as cell division cycle regulatory proteins. Septins are highly conserved in yeast, Drosophila, and mouse and appear to regulate cytoskeletal organization. Disruption of septin function disturbs cytokinesis and results in large multinucleate or polyploid cells. This gene is mapped to 22q11, the region frequently deleted in DiGeorge and velocardiofacial syndromes. A translocation involving the MLL gene and this gene has also been reported in patients with acute myeloid leukemia. Alternative splicing results in multiple transcript variants. The presence of a non-consensus polyA signal (AACAAAT) in this gene also results in read-through transcription into the downstream neighboring gene (GP1BB; platelet glycoprotein Ib), whereby larger, non-coding transcripts are produced.

Immunogen information

Gene ID:

5413

Uniprot

Q99719

Antibody Information

Recommended dilutions:

WB 1:500 - 1:2000 IHC

1:100 - 1:200 IF 1:50 -

1:200

Source:

Rabbit

Isotype:

IgG

Purification:

Affinity purification

Synonyms:

SEPT5; CDCREL; CDCREL-1; CDCREL1; H5; HCDCREL-1; PNUTL1; septin-5

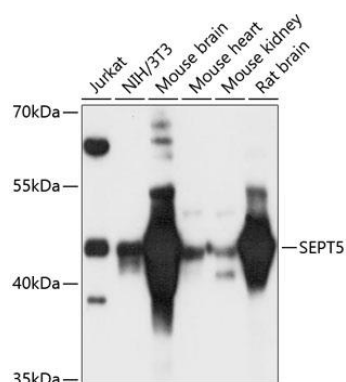
Immunogen:

Recombinant fusion protein containing a sequence corresponding to amino acids 1-369 of human SEPT5 (NP_002679.2).

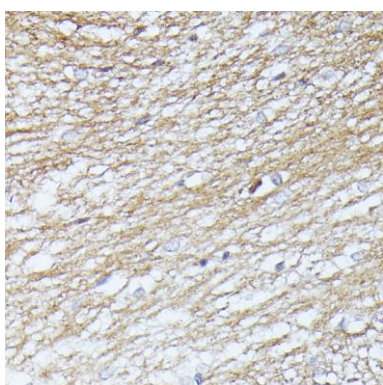
Storage:

Store at -20°C. Avoid freeze / thaw cycles. Buffer: PBS with 0.02% sodium azide, 50% glycerol, pH7.3.

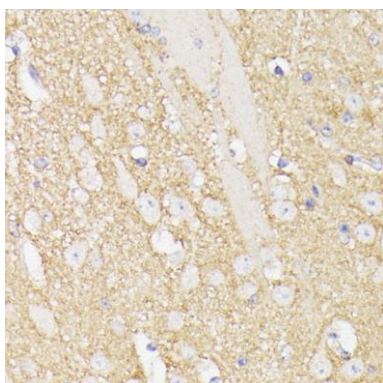
Product Images



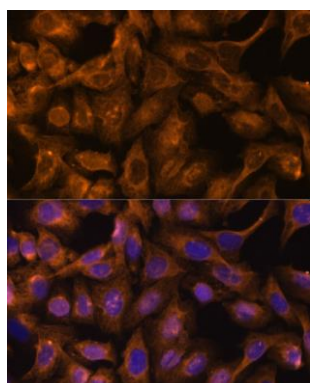
Western blot analysis of extracts of various cell lines, using SEPT5 antibody (CAB12953) at 1:3000 dilution. Secondary antibody: HRP Goat Anti-Rabbit IgG (H+L) (CABS014) at 1:10000 dilution. Lysates/proteins: 25ug per lane. Blocking buffer: 3% nonfat dry milk in TBST. Detection: ECL Basic Kit (CABM00020). Exposure time: 30s.



Immunohistochemistry of paraffin-embedded rat brain using SEPT5 antibody (CAB12953) at dilution of 1:100 (40x lens).



Immunohistochemistry of paraffin-embedded mouse brain using SEPT5 antibody (CAB12953) at dilution of 1:100 (40x lens).



Immunofluorescence analysis of U-2 OS cells using 43713 antibody (CAB12953) at dilution of 1:100. Blue: DAPI for nuclear staining.