

# ESR1 Rabbit Monoclonal Antibody



CAB12976

## Product Information

### Size:

20uL, 50uL, 100uL, 200uL

### Observed MW:

66kDa

### Calculated MW:

35kDa/47kDa/53kDa/66kDa

### Applications:

WB IF

### Reactivity:

Human, Mouse, Rat

## Antibody Information

### Recommended dilutions:

WB 1:1000 - 1:2000 IF 1:50  
- 1:200

### Source:

Rabbit

### Isotype:

IgG

### Purification:

Affinity purification

## Protein Background

This gene encodes an estrogen receptor, a ligand-activated transcription factor composed of several domains important for hormone binding, DNA binding, and activation of transcription. The protein localizes to the nucleus where it may form a homodimer or a heterodimer with estrogen receptor 2. Estrogen and its receptors are essential for sexual development and reproductive function, but also play a role in other tissues such as bone. Estrogen receptors are also involved in pathological processes including breast cancer, endometrial cancer, and osteoporosis. Alternative promoter usage and alternative splicing result in dozens of transcript variants, but the full-length nature of many of these variants has not been determined.

## Immunogen information

### Gene ID:

2099

### Uniprot

P03372

### Synonyms:

ESR1; ER; ESR; ESRA; ESTRR; Era; NR3A1; ER alpha

### Immunogen:

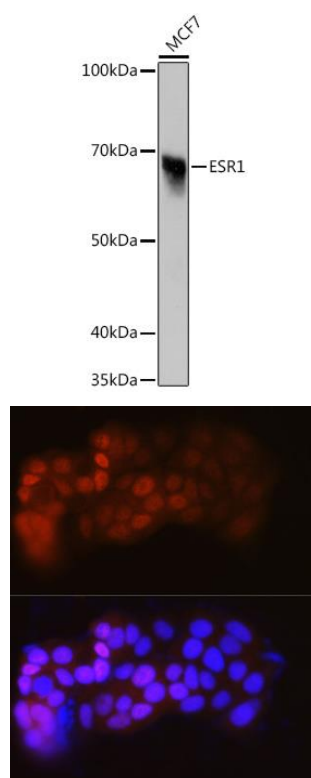
A synthetic peptide of human ESR1

### Storage:

Store at -20°C. Avoid freeze / thaw cycles. Buffer: PBS with 0.02% sodium azide, 0.05% BSA, 50% glycerol, pH7.3.

## Product Images

---



Western blot analysis of extracts of MCF7 cells, using ESR1 antibody ( A12976) at 1:1000 dilution. Secondary antibody: HRP Goat Anti-Rabbit IgG (H+L) (CABS014) at 1:10000 dilution. Lysates/proteins: 25ug per lane. Blocking buffer: 3% nonfat dry milk in TBST. Detection: ECL Enhanced Kit (CABM00021). Exposure time: 60s.

Immunofluorescence analysis of MCF-7 cells using ER alpha antibody (CAB12976). Blue: DAPI for nuclear staining.