

GBP2 Rabbit Polyclonal Antibody



CAB12994

Product Information

Size:

20uL, 50uL, 100uL, 200uL

Observed MW:

67kDa/70kDa

Calculated MW:

67kDa

Applications:

WB IF

Reactivity:

Human, Mouse

Protein Background

This gene belongs to the guanine-binding protein (GBP) family, which includes interferon-induced proteins that can bind to guanine nucleotides (GMP, GDP and GTP). The encoded protein is a GTPase which hydrolyzes GTP, predominantly to GDP. The protein may play a role as a marker of squamous cell carcinomas.

Immunogen information

Gene ID:

2634

Uniprot

P32456

Synonyms:

GBP2

Antibody Information

Recommended dilutions:

WB 1:500 - 1:2000 IF 1:50 - 1:200

Source:

Rabbit

Isotype:

IgG

Purification:

Affinity purification

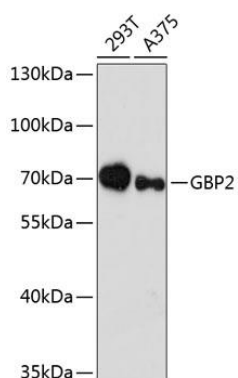
Immunogen:

Recombinant fusion protein containing a sequence corresponding to amino acids 410-520 of human GBP2 (NP_004111.2).

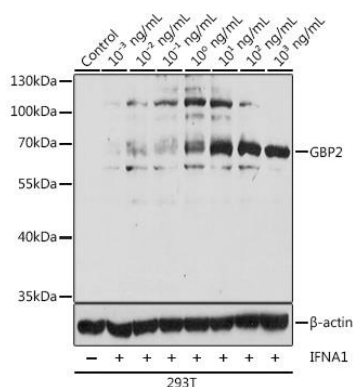
Storage:

Store at -20°C. Avoid freeze / thaw cycles. Buffer: PBS with 0.02% sodium azide, 50% glycerol, pH7.3.

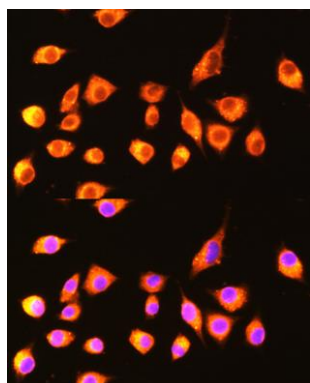
Product Images



Western blot analysis of extracts of various cell lines, using GBP2 antibody (CAB12994) at 1:3000 dilution. Secondary antibody: HRP Goat Anti-Rabbit IgG (H+L) (CABS014) at 1:10000 dilution. Lysates/proteins: 25ug per lane. Blocking buffer: 3% nonfat dry milk in TBST. Detection: ECL Enhanced Kit (CABM00021). Exposure time: 90s.



Western blot analysis of extracts of 293T cells, using GBP2 antibody (CAB12994) at 1:1000 dilution. 293T cells treated with different concentrations of IFNA1. Secondary antibody: HRP Goat Anti-Rabbit IgG (H+L) (CABS014) at 1:10000 dilution. Lysates/proteins: 25ug per lane. Blocking buffer: 3% BSA. Detection: ECL Basic Kit (CABM00020). Exposure time: 10s.



Immunofluorescence analysis of L929 cells using GBP2 Rabbit pAb (CAB12994) at dilution of 1:100 (40x lens). Blue: DAPI for nuclear staining.