

# IFI30 Rabbit Polyclonal Antibody



CAB12995

## Product Information

### Size:

20uL, 50uL, 100uL, 200uL

### Observed MW:

28kDa

### Calculated MW:

27kDa

### Applications:

WB

### Reactivity:

Human

## Protein Background

The protein encoded by this gene is a lysosomal thiol reductase that at low pH can reduce protein disulfide bonds. The enzyme is expressed constitutively in antigen-presenting cells and induced by gamma-interferon in other cell types. This enzyme has an important role in MHC class II-restricted antigen processing.

## Immunogen information

### Gene ID:

10437

### Uniprot

P13284

### Synonyms:

IFI30; GILT; IFI-30; IP-30; IP30

## Antibody Information

### Recommended dilutions:

WB 1:500 - 1:2000

### Source:

Rabbit

### Isotype:

IgG

### Purification:

Affinity purification

### Immunogen:

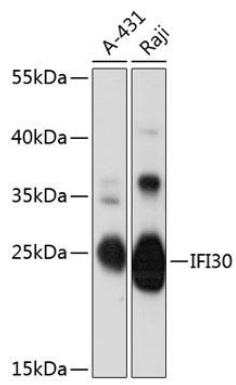
Recombinant fusion protein containing a sequence corresponding to amino acids 1-250 of human IFI30 (NP\_006323.2).

### Storage:

Store at -20°C. Avoid freeze / thaw cycles. Buffer: PBS with 0.02% sodium azide, 50% glycerol, pH7.3.

## Product Images

---



Western blot - IFI30 Polyclonal Antibody (CAB12995)