

RIPK3 Rabbit Polyclonal Antibody



CAB12996

Product Information

Size:

20uL, 50uL, 100uL, 200uL

Observed MW:

50-57kDa

Calculated MW:

46kDa

Applications:

WB IF

Reactivity:

Human, Mouse, Rat

Protein Background

The product of this gene is a member of the receptor-interacting protein (RIP) family of serine/threonine protein kinases, and contains a C-terminal domain unique from other RIP family members. The encoded protein is predominantly localized to the cytoplasm, and can undergo nucleocytoplasmic shuttling dependent on novel nuclear localization and export signals. It is a component of the tumor necrosis factor (TNF) receptor-I signaling complex, and can induce apoptosis and weakly activate the NF-kappaB transcription factor.

Immunogen information

Gene ID:

56532

Uniprot

E9PZP3

Synonyms:

RIPK3; RIP3

Antibody Information

Recommended dilutions:

WB 1:500 - 1:2000 IF 1:50 - 1:200

Source:

Rabbit

Isotype:

IgG

Purification:

Affinity purification

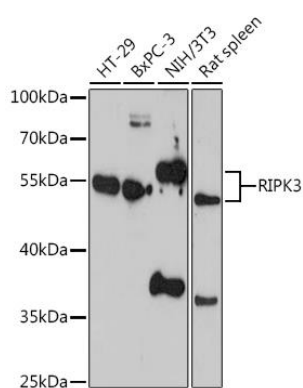
Immunogen:

Recombinant protein of mouse RIPK3

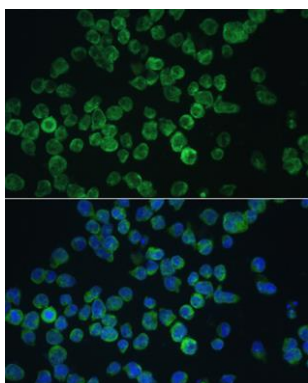
Storage:

Store at -20°C. Avoid freeze / thaw cycles. Buffer: PBS with 0.02% sodium azide, 50% glycerol, pH7.3.

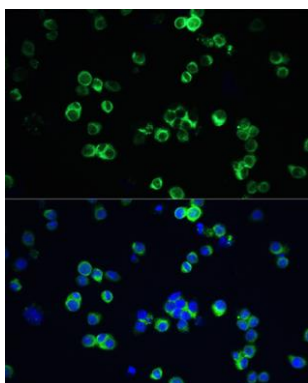
Product Images



Western blot analysis of extracts of various cell lines, using RIPK3 antibody (CAB12996) at 1:1000 dilution. Secondary antibody: HRP Goat Anti-Rabbit IgG (H+L) (CABS014) at 1:10000 dilution. Lysates/proteins: 25ug per lane. Blocking buffer: 3% nonfat dry milk in TBST. Detection: ECL Enhanced Kit (CABM00021). Exposure time: 180s.



Immunofluorescence analysis of Jurkat cells using RIPK3 Rabbit pAb (CAB12996) at dilution of 1:100. Blue: DAPI for nuclear staining.



Immunofluorescence analysis of RAW264.7 cells using RIPK3 Rabbit pAb (CAB12996) at dilution of 1:100. Blue: DAPI for nuclear staining.