

CD40L Rabbit Polyclonal Antibody



CAB13002

Product Information

Size:

20uL, 50uL, 100uL, 200uL

Observed MW:

29kDa

Calculated MW:

29kDa

Applications:

WB IF

Reactivity:

Human, Mouse, Rat

Antibody Information

Recommended dilutions:

WB 1:1000 - 1:2000 IF 1:50
- 1:200

Source:

Rabbit

Isotype:

IgG

Purification:

Affinity purification

Protein Background

The protein encoded by this gene is expressed on the surface of T cells. It regulates B cell function by engaging CD40 on the B cell surface. A defect in this gene results in an inability to undergo immunoglobulin class switch and is associated with hyper-IgM syndrome.

Immunogen information

Gene ID:

959

Uniprot

P29965

Synonyms:

CD154; CD40L; HIGM1; IGM; IMD3; T-BAM; TNFSF5; TRAP; gp39;
hCD40L; CD40LG

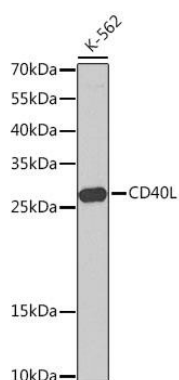
Immunogen:

A synthetic peptide corresponding to a sequence within amino acids 79-129 of human CD40L (NP_000065.1).

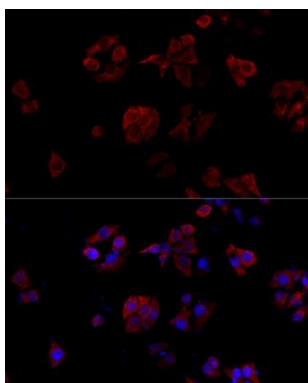
Storage:

Store at -20°C. Avoid freeze / thaw cycles. Buffer: PBS with 0.02% sodium azide, 50% glycerol, pH7.3.

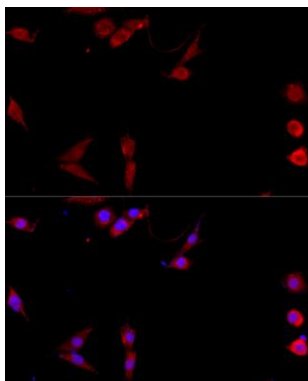
Product Images



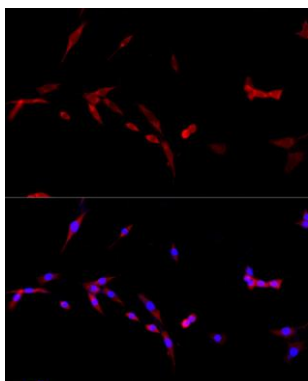
Western blot analysis of extracts of K561 cells, using CD40L antibody (CAB13002) at 1:1000 dilution. Secondary antibody: HRP Goat Anti-Rabbit IgG (H+L) (CABS014) at 1:10000 dilution. Lysates/proteins: 25ug per lane. Blocking buffer: 3% nonfat dry milk in TBST. Detection: ECL Basic Kit (CABM00020). Exposure time: 60s.



Immunofluorescence analysis of HeLa cells using CD40L antibody (CAB13002) at dilution of 1:100. Blue: DAPI for nuclear staining.



Immunofluorescence analysis of NIH/3T3 cells using CD40L antibody (CAB13002) at dilution of 1:100. Blue: DAPI for nuclear staining.



Immunofluorescence analysis of PC-12 cells using CD40L antibody (CAB13002) at dilution of 1:100. Blue: DAPI for nuclear staining.