

# CTU2 Rabbit Polyclonal Antibody



CAB13003

---

## Product Information

### Size:

20uL, 50uL, 100uL, 200uL

### Observed MW:

56kDa

### Calculated MW:

46kDa/52kDa/56kDa

### Applications:

WB

### Reactivity:

Human

## Protein Background

This gene encodes a protein which is involved in the post-transcriptional modification of transfer RNAs (tRNAs). The encoded protein plays a role in thiolation of uridine residue present at the wobble position in a subset of tRNAs, resulting in enhanced codon reading accuracy. Alternative splicing results in multiple transcript variants encoding different isoforms.

## Immunogen information

### Gene ID:

348180

### Uniprot

Q2VPK5

### Synonyms:

CTU2; C16orf84; NCS2; UPF0432

## Antibody Information

### Recommended dilutions:

WB 1:500 - 1:2000

### Source:

Rabbit

### Isotype:

IgG

### Purification:

Affinity purification

### Immunogen:

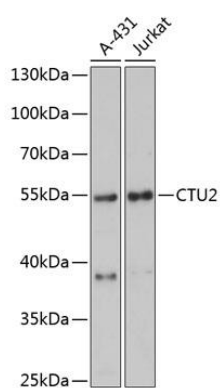
Recombinant fusion protein containing a sequence corresponding to amino acids 186-515 of human CTU2 (NP\_001012777.1).

### Storage:

Store at -20°C. Avoid freeze / thaw cycles. Buffer: PBS with 0.02% sodium azide, 50% glycerol, pH7.3.

## Product Images

---



Western blot analysis of extracts of various cell lines, using CTU2 antibody (CAB13003) at 1:3000 dilution. Secondary antibody: HRP Goat Anti-Rabbit IgG (H+L) (CABS014) at 1:10000 dilution. Lysates/proteins: 25ug per lane. Blocking buffer: 3% nonfat dry milk in TBST. Detection: ECL Basic Kit (CABM00020). Exposure time: 90s.