

ARR3 Rabbit Polyclonal Antibody



CAB13009

Product Information

Size:

20uL, 50uL, 100uL, 200uL

Observed MW:

42kDa

Calculated MW:

39kDa/42kDa

Applications:

WB

Reactivity:

Mouse, Rat

Protein Background

The protein encoded by this gene is a non-visual arrestin which binds to agonist-activated, phosphorylated G protein-coupled receptors. This binding uncouples the receptor from the heterotrimeric G protein, resulting in termination of the G protein-coupled receptor signaling. The encoded protein also is a part of the centrosome, interacting with gamma-tubulin to help regulate proper centrosome function.

Immunogen information

Gene ID:

407

Uniprot

P36575

Synonyms:

ARR3; ARRX; cArr

Antibody Information

Recommended dilutions:

WB 1:500 - 1:2000

Source:

Rabbit

Isotype:

IgG

Purification:

Affinity purification

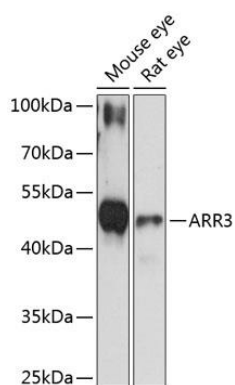
Immunogen:

Recombinant fusion protein containing a sequence corresponding to amino acids 1-260 of human ARR3 (NP_004303.2).

Storage:

Store at -20°C. Avoid freeze / thaw cycles. Buffer: PBS with 0.02% sodium azide, 50% glycerol, pH7.3.

Product Images



Western blot analysis of extracts of various cell lines, using ARR3 antibody (CAB13009) at 1:3000 dilution. Secondary antibody: HRP Goat Anti-Rabbit IgG (H+L) (CABS014) at 1:10000 dilution. Lysates/proteins: 25ug per lane. Blocking buffer: 3% nonfat dry milk in TBST. Detection: ECL Basic Kit (CABM00020). Exposure time: 10s.