

# FMNL1 Rabbit Polyclonal Antibody



CAB13010

---

## Product Information

### Size:

20uL, 50uL, 100uL, 200uL

### Observed MW:

150kDa

### Calculated MW:

121kDa/122kDa/128kDa

### Applications:

WB

### Reactivity:

Human, Mouse

## Antibody Information

### Recommended dilutions:

WB 1:500 - 1:2000

### Source:

Rabbit

### Isotype:

IgG

### Purification:

Affinity purification

## Protein Background

This gene encodes a formin-related protein. Formin-related proteins have been implicated in morphogenesis, cytokinesis, and cell polarity. An alternative splice variant has been described but its full length sequence has not been determined.

## Immunogen information

### Gene ID:

752

### Uniprot

O95466

### Synonyms:

FMNL1; C17orf1; C17orf1B; FHOD4; FMNL; KW-13

### Immunogen:

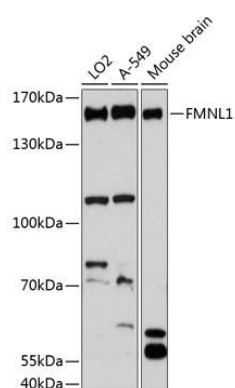
Recombinant fusion protein containing a sequence corresponding to amino acids 900-1070 of human FMNL1 (NP\_005883.2).

### Storage:

Store at -20°C. Avoid freeze / thaw cycles. Buffer: PBS with 0.02% sodium azide, 50% glycerol, pH7.3.

## Product Images

---



Western blot analysis of extracts of various cell lines, using FMNL1 antibody (CAB13010) at 1:3000 dilution. Secondary antibody: HRP Goat Anti-Rabbit IgG (H+L) (CABS014) at 1:10000 dilution. Lysates/proteins: 25ug per lane. Blocking buffer: 3% nonfat dry milk in TBST. Detection: ECL Basic Kit (CABM00020). Exposure time: 90s.