

CEL Rabbit Polyclonal Antibody



CAB13011

Product Information

Size:

20uL, 50uL, 100uL, 200uL

Observed MW:

67kDa

Calculated MW:

71kDa/79kDa

Applications:

WB

Reactivity:

Mouse

Antibody Information

Recommended dilutions:

WB 1:500 - 1:2000

Source:

Rabbit

Isotype:

IgG

Purification:

Affinity purification

Protein Background

The protein encoded by this gene is a glycoprotein secreted from the pancreas into the digestive tract and from the lactating mammary gland into human milk. The physiological role of this protein is in cholesterol and lipid-soluble vitamin ester hydrolysis and absorption. This encoded protein promotes large chylomicron production in the intestine. Also its presence in plasma suggests its interactions with cholesterol and oxidized lipoproteins to modulate the progression of atherosclerosis. In pancreatic tumoral cells, this encoded protein is thought to be sequestered within the Golgi compartment and is probably not secreted. This gene contains a variable number of tandem repeat (VNTR) polymorphism in the coding region that may influence the function of the encoded protein.

Immunogen information

Gene ID:

1056

Uniprot

P19835

Synonyms:

CEL; BAL; BSDL; BSSL; CELL; CEase; FAP; FAPP; LIPA; MODY8

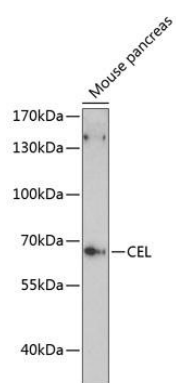
Immunogen:

Recombinant fusion protein containing a sequence corresponding to amino acids 350-550 of human CEL (NP_001798.2).

Storage:

Store at -20°C. Avoid freeze / thaw cycles. Buffer: PBS with 0.02% sodium azide, 50% glycerol, pH7.3.

Product Images



Western blot analysis of extracts of mouse pancreas, using CEL antibody (CAB13011) at 1:3000 dilution. Secondary antibody: HRP Goat Anti-Rabbit IgG (H+L) (CABS014) at 1:10000 dilution. Lysates/proteins: 25ug per lane. Blocking buffer: 3% nonfat dry milk in TBST. Detection: ECL Basic Kit (CABM00020). Exposure time: 90s.