

FLNC Rabbit Polyclonal Antibody



CAB13018

Product Information

Size:

20uL, 50uL, 100uL, 200uL

Observed MW:

302kDa

Calculated MW:

287kDa/291kDa

Applications:

WB IF

Reactivity:

Human, Mouse

Antibody Information

Recommended dilutions:

WB 1:500 - 1:2000 IF 1:50 - 1:200

Source:

Rabbit

Isotype:

IgG

Purification:

Affinity purification

Protein Background

This gene encodes one of three related filamin genes, specifically gamma filamin. These filamin proteins crosslink actin filaments into orthogonal networks in cortical cytoplasm and participate in the anchoring of membrane proteins for the actin cytoskeleton. Three functional domains exist in filamin: an N-terminal filamentous actin-binding domain, a C-terminal self-association domain, and a membrane glycoprotein-binding domain. Two transcript variants encoding different isoforms have been found for this gene.

Immunogen information

Gene ID:

2318

Uniprot

Q14315

Synonyms:

FLNC; ABP-280; ABP280A; ABPA; ABPL; CMH26; FLN2; MFM5; MPD4; RCM5; filamin-C

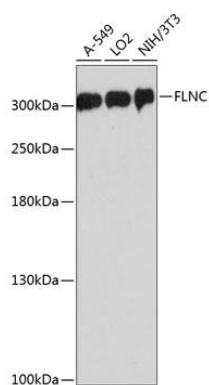
Immunogen:

Recombinant fusion protein containing a sequence corresponding to amino acids 2160-2340 of human FLNC (NP_001449.3).

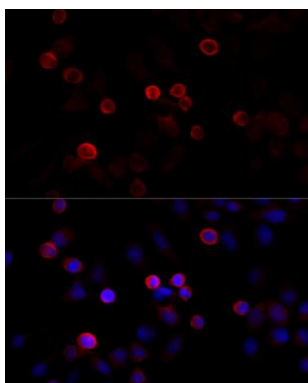
Storage:

Store at -20°C. Avoid freeze / thaw cycles. Buffer: PBS with 0.02% sodium azide, 50% glycerol, pH7.3.

Product Images



Western blot analysis of extracts of various cell lines, using FLNC antibody (CAB13018) at 1:3000 dilution. Secondary antibody: HRP Goat Anti-Rabbit IgG (H+L) (CABS014) at 1:10000 dilution. Lysates/proteins: 25ug per lane. Blocking buffer: 3% nonfat dry milk in TBST. Detection: ECL Basic Kit (CABM00020). Exposure time: 1s.



Immunofluorescence analysis of HeLa cells using FLNC antibody (CAB13018) at dilution of 1:100 (40x lens). Blue: DAPI for nuclear staining.