

# HAL Rabbit Polyclonal Antibody



CAB13021

---

## Product Information

### Size:

20uL, 50uL, 100uL, 200uL

### Observed MW:

73kDa

### Calculated MW:

49kDa/64kDa/72kDa

### Applications:

WB IHC IF

### Reactivity:

Human, Mouse, Rat

## Antibody Information

### Recommended dilutions:

WB 1:500 - 1:2000 IHC 1:50  
- 1:100 IF 1:50 - 1:100

### Source:

Rabbit

### Isotype:

IgG

### Purification:

Affinity purification

## Protein Background

Histidine ammonia-lyase is a cytosolic enzyme catalyzing the first reaction in histidine catabolism, the nonoxidative deamination of L-histidine to trans-urocanic acid. Histidine ammonia-lyase defects cause histidinemia which is characterized by increased histidine and histamine and decreased urocanic acid in body fluids. Several transcript variants encoding different isoforms have been found for this gene.

## Immunogen information

### Gene ID:

3034

### Uniprot

P42357

### Synonyms:

HAL; HIS; HSTD

### Immunogen:

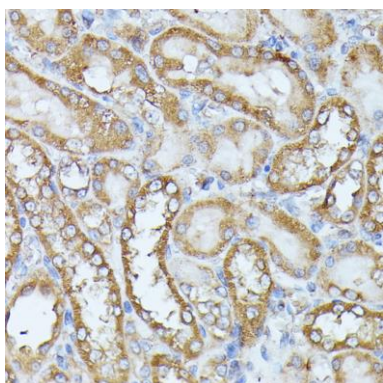
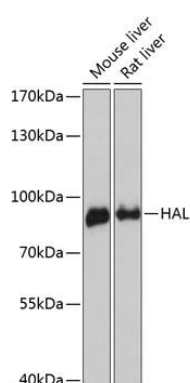
Recombinant fusion protein containing a sequence corresponding to amino acids 1-200 of human HAL (NP\_002099.1).

### Storage:

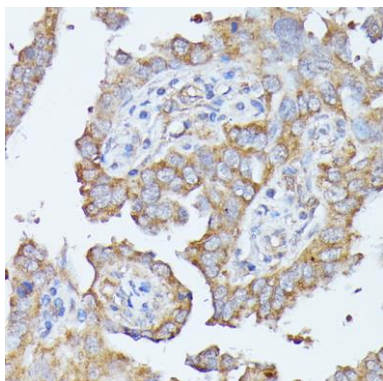
Store at -20°C. Avoid freeze / thaw cycles. Buffer: PBS with 0.02% sodium azide, 50% glycerol, pH7.3.

## Product Images

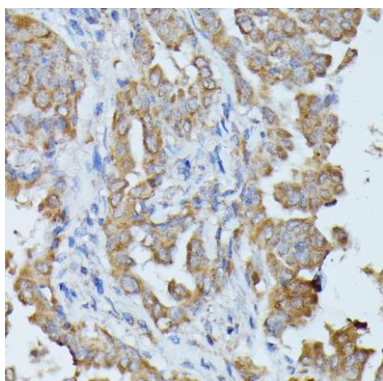
---



Immunohistochemistry of paraffin-embedded rat kidney using HAL antibody (CAB13021) at dilution of 1:100 (40x lens).



Immunohistochemistry of paraffin-embedded human lung cancer using HAL antibody (CAB13021) at dilution of 1:100 (40x lens).



Immunohistochemistry of paraffin-embedded human thyroid cancer using HAL antibody (CAB13021) at dilution of 1:100 (40x lens).