

IGF2R Rabbit Polyclonal Antibody



CAB13022

Product Information

Size:

20uL, 50uL, 100uL, 200uL

Observed MW:

274kDa

Calculated MW:

274kDa

Applications:

WB IHC IF

Reactivity:

Human, Mouse, Rat

Antibody Information

Recommended dilutions:

WB 1:500 - 1:2000 IHC 1:50
- 1:200 IF 1:50 - 1:200

Source:

Rabbit

Isotype:

IgG

Purification:

Affinity purification

Protein Background

This gene encodes a receptor for both insulin-like growth factor 2 and mannose 6-phosphate. The binding sites for each ligand are located on different segments of the protein. This receptor has various functions, including in the intracellular trafficking of lysosomal enzymes, the activation of transforming growth factor beta, and the degradation of insulin-like growth factor 2. Mutation or loss of heterozygosity of this gene has been associated with risk of hepatocellular carcinoma. The orthologous mouse gene is imprinted and shows exclusive expression from the maternal allele; however, imprinting of the human gene may be polymorphic, as only a minority of individuals showed biased expression from the maternal allele (PMID:8267611).

Immunogen information

Gene ID:

3482

Uniprot

P11717

Synonyms:

IGF2R; CD222; CI-M6PR; CIMPR; M6P-R; M6P/IGF2R; MPR 300;
MPR1; MPR300; MPRI

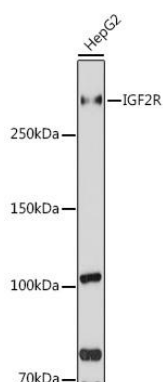
Immunogen:

Recombinant fusion protein containing a sequence corresponding to amino acids 2327-2491 of human IGF2R (NP_000867.2).

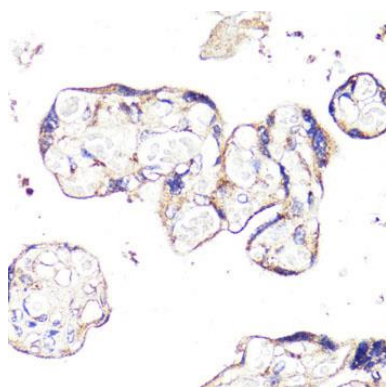
Storage:

Store at -20°C. Avoid freeze / thaw cycles. Buffer: PBS with 0.02% sodium azide, 50% glycerol, pH7.3.

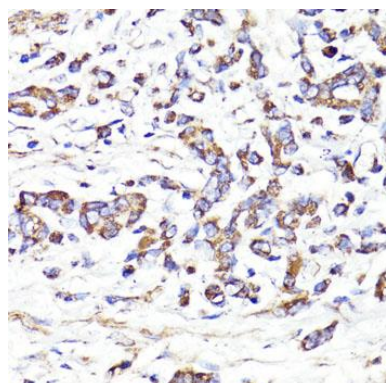
Product Images



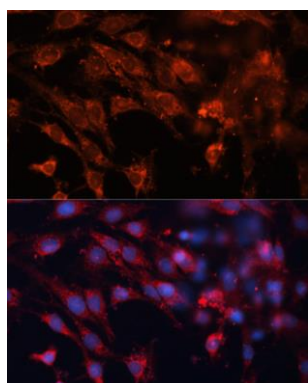
Western blot analysis of extracts of HepG2 cells, using IGF2R antibody (CAB13022) at 1:1000 dilution. Secondary antibody: HRP Goat Anti-Rabbit IgG (H+L) (CABS014) at 1:10000 dilution. Lysates/proteins: 25ug per lane. Blocking buffer: 3% nonfat dry milk in TBST. Detection: ECL Basic Kit (CABM00020). Exposure time: 60s.



Immunohistochemistry of paraffin-embedded human placenta using IGF2R antibody (CAB13022) at dilution of 1:100 (40x lens).



Immunohistochemistry of paraffin-embedded human gastric cancer using IGF2R antibody (CAB13022) at dilution of 1:100 (40x lens).



Immunofluorescence analysis of C6 cells using IGF2R antibody (CAB13022) at dilution of 1:100. Blue: DAPI for nuclear staining.