

IL12B Rabbit Polyclonal Antibody



CAB13024

Product Information

Size:

20uL, 50uL, 100uL, 200uL

Observed MW:

37kDa

Calculated MW:

37kDa

Applications:

WB IF

Reactivity:

Human

Antibody Information

Recommended dilutions:

WB 1:1000 - 1:2000 IF
1:100 - 1:200

Source:

Rabbit

Isotype:

IgG

Purification:

Affinity purification

Protein Background

This gene encodes a subunit of interleukin 12, a cytokine that acts on T and natural killer cells, and has a broad array of biological activities. Interleukin 12 is a disulfide-linked heterodimer composed of the 40 kD cytokine receptor like subunit encoded by this gene, and a 35 kD subunit encoded by IL12A. This cytokine is expressed by activated macrophages that serve as an essential inducer of Th1 cells development. This cytokine has been found to be important for sustaining a sufficient number of memory/effector Th1 cells to mediate long-term protection to an intracellular pathogen. Overexpression of this gene was observed in the central nervous system of patients with multiple sclerosis (MS), suggesting a role of this cytokine in the pathogenesis of the disease. The promoter polymorphism of this gene has been reported to be associated with the severity of atopic and non-atopic asthma in children.

Immunogen information

Gene ID:

3593

Uniprot

P29460

Synonyms:

IL12B; CLMF; CLMF2; IL-12B; IMD28; IMD29; NKSF; NKSF2

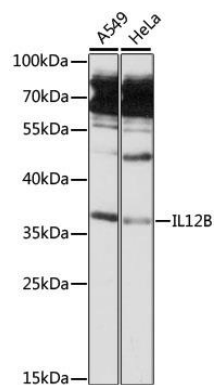
Immunogen:

Recombinant fusion protein containing a sequence corresponding to amino acids 23-328 of human IL12B (NP_002178.2).

Storage:

Store at -20°C. Avoid freeze / thaw cycles. Buffer: PBS with 0.02% sodium azide, 50% glycerol, pH7.3.

Product Images



Western blot analysis of extracts of various cell lines, using IL12B antibody (CAB13024) at 1:3000 dilution. Secondary antibody: HRP Goat Anti-Rabbit IgG (H+L) (CABS014) at 1:10000 dilution. Lysates/proteins: 25ug per lane. Blocking buffer: 3% nonfat dry milk in TBST. Detection: ECL Basic Kit (CABM00020). Exposure time: 20s.