

LRPAP1 Rabbit Polyclonal Antibody



CAB13026

Product Information

Size:

20uL, 50uL, 100uL, 200uL

Observed MW:

42kDa

Calculated MW:

41kDa

Applications:

WB IHC IF

Reactivity:

Human, Mouse, Rat

Protein Background

This gene encodes a protein that interacts with the low density lipoprotein (LDL) receptor-related protein and facilitates its proper folding and localization by preventing the binding of ligands. Mutations in this gene have been identified in individuals with myopia 23. Alternative splicing results in multiple transcript variants.

Immunogen information

Gene ID:

4043

Uniprot

P30533

Synonyms:

LRPAP1; A2MRAP; A2RAP; HBP44; MRAP; MYP23; RAP; alpha-2-MRAP

Antibody Information

Recommended dilutions:

WB 1:500 - 1:2000 IHC

1:100 - 1:200 IF 1:50 -

1:200

Source:

Rabbit

Immunogen:

Recombinant fusion protein containing a sequence corresponding to amino acids 35-357 of human LRPAP1 (NP_002328.1).

Storage:

Store at -20°C. Avoid freeze / thaw cycles. Buffer: PBS with 0.02% sodium azide, 50% glycerol, pH7.3.

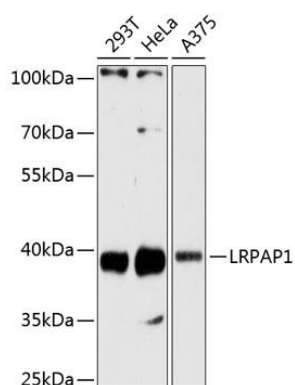
Isotype:

IgG

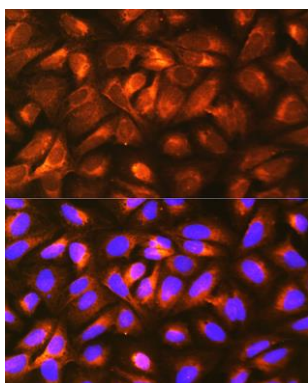
Purification:

Affinity purification

Product Images



Western blot analysis of extracts of various cell lines, using LRPAP1 antibody (CAB13026) at 1:3000 dilution. Secondary antibody: HRP Goat Anti-Rabbit IgG (H+L) (CABS014) at 1:10000 dilution. Lysates/proteins: 25ug per lane. Blocking buffer: 3% nonfat dry milk in TBST. Detection: ECL Basic Kit (CABM00020). Exposure time: 60s.



Immunofluorescence analysis of U-2 OS cells using LRPAP1 Rabbit pAb (CAB13026) at dilution of 1:100 (40x lens). Blue: DAPI for nuclear staining.