

# PPP1R7 Rabbit Polyclonal Antibody



CAB13040

---

## Product Information

### Size:

20uL, 50uL, 100uL, 200uL

### Observed MW:

41kDa

### Calculated MW:

25kDa/27kDa/32kDa/36kDa/  
41kDa

### Applications:

WB

### Reactivity:

Mouse, Rat

## Antibody Information

### Recommended dilutions:

WB 1:1000 - 1:2000

### Source:

Rabbit

### Isotype:

IgG

### Purification:

Affinity purification

## Protein Background

This gene encodes a protein subunit that regulates the activity of the serine/threonine phosphatase, protein phosphatase-1. The encoded protein is required for completion of the mitotic cycle and for targeting protein phosphatase-1 to mitotic kinetochores. Alternate splicing results in multiple transcript variants.

## Immunogen information

### Gene ID:

5510

### Uniprot

Q15435

### Synonyms:

PPP1R7; SDS22

### Immunogen:

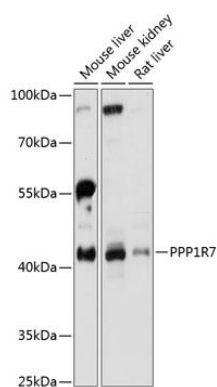
Recombinant fusion protein containing a sequence corresponding to amino acids 281-360 of human PPP1R7 (NP\_002703.1).

### Storage:

Store at -20°C. Avoid freeze / thaw cycles. Buffer: PBS with 0.02% sodium azide, 50% glycerol, pH7.3.

## Product Images

---



Western blot analysis of extracts of various cell lines, using PPP1R7 antibody (CAB13040) at 1:3000 dilution. Secondary antibody: HRP Goat Anti-Rabbit IgG (H+L) (CABS014) at 1:10000 dilution. Lysates/proteins: 25ug per lane. Blocking buffer: 3% nonfat dry milk in TBST. Detection: ECL Basic Kit (CABM00020). Exposure time: 90s.