

# SPTB Rabbit Polyclonal Antibody



CAB13048

---

## Product Information

### Size:

20uL, 50uL, 100uL, 200uL

### Observed MW:

256kDa

### Calculated MW:

242kDa/246kDa/267kDa

### Applications:

WB IHC

### Reactivity:

Human, Mouse, Rat

## Antibody Information

### Recommended dilutions:

WB 1:500 - 1:2000 IHC 1:50  
- 1:200

### Source:

Rabbit

### Isotype:

IgG

### Purification:

Affinity purification

## Protein Background

This locus encodes a member of the spectrin gene family. Spectrin proteins, along with ankyrin, play a role in cell membrane organization and stability. The protein encoded by this locus functions in stability of erythrocyte membranes, and mutations in this gene have been associated with spherocytosis type 2, hereditary elliptocytosis, and neonatal hemolytic anemia. Alternatively spliced transcript variants have been described.

## Immunogen information

### Gene ID:

6710

### Uniprot

P11277

### Synonyms:

SPTB; EL3; HS2; HSPTB1; SPH2; spectrin beta

### Immunogen:

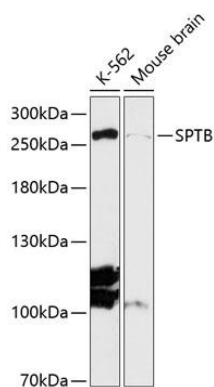
Recombinant fusion protein containing a sequence corresponding to amino acids 2080-2180 of human SPTB (NP\_001020029.1).

### Storage:

Store at -20°C. Avoid freeze / thaw cycles. Buffer: PBS with 0.02% sodium azide, 50% glycerol, pH7.3.

## Product Images

---



Western blot analysis of extracts of various cell lines, using SPTB antibody (CAB13048) at 1:3000 dilution. Secondary antibody: HRP Goat Anti-Rabbit IgG (H+L) (CABS014) at 1:10000 dilution. Lysates/proteins: 25ug per lane. Blocking buffer: 3% nonfat dry milk in TBST. Detection: ECL Enhanced Kit (CABM00021). Exposure time: 90s.