

## CAB13050

---

### Product Information

**Size:**

20uL, 50uL, 100uL, 200uL

**Observed MW:**

13kDa

**Calculated MW:**

12kDa/15kDa

**Applications:**

WB IHC

**Reactivity:**

Human, Mouse, Rat

### Antibody Information

**Recommended dilutions:**

WB 1:1000 - 1:2000 IHC

1:50 - 1:200

**Source:**

Rabbit

**Isotype:**

IgG

**Purification:**

Affinity purification

### Protein Background

The product of this gene is one of four proteins (cofactors A, D, E, and C) involved in the pathway leading to correctly folded beta-tubulin from folding intermediates. Cofactors A and D are believed to play a role in capturing and stabilizing beta-tubulin intermediates in a quasi-native confirmation. Cofactor E binds to the cofactor D/beta-tubulin complex; interaction with cofactor C then causes the release of beta-tubulin polypeptides that are committed to the native state. This gene encodes chaperonin cofactor A. Multiple alternatively spliced transcript variants encoding different isoforms have been found for this gene.

### Immunogen information

**Gene ID:**

6902

**Uniprot**

O75347

**Synonyms:**

TBCA

**Immunogen:**

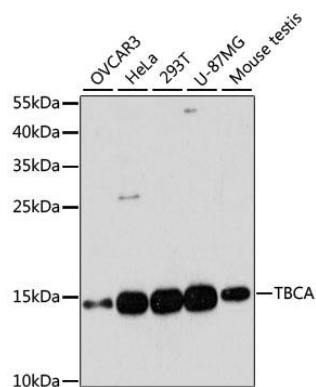
Recombinant fusion protein containing a sequence corresponding to amino acids 1-108 of human TBCA (NP\_004598.1).

**Storage:**

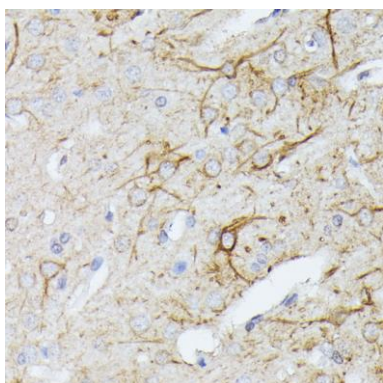
Store at -20°C. Avoid freeze / thaw cycles. Buffer: PBS with 0.02% sodium azide, 50% glycerol, pH7.3.

## Product Images

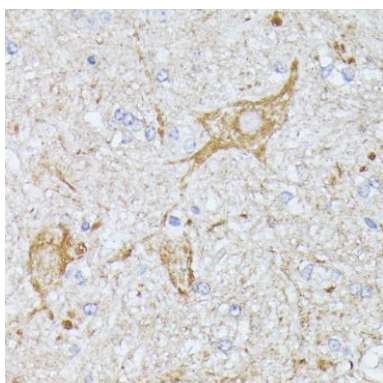
---



Western blot analysis of extracts of various cell lines, using TBCA antibody (CAB13050) at 1:3000 dilution. Secondary antibody: HRP Goat Anti-Rabbit IgG (H+L) (CABS014) at 1:10000 dilution. Lysates/proteins: 25ug per lane. Blocking buffer: 3% nonfat dry milk in TBST. Detection: ECL Basic Kit (CABM00020). Exposure time: 90s.



Immunohistochemistry of paraffin-embedded rat brain using TBCA antibody (CAB13050) at dilution of 1:100 (40x lens).



Immunohistochemistry of paraffin-embedded mouse spinal cord using TBCA antibody (CAB13050) at dilution of 1:100 (40x lens).