

IFT88 Rabbit Polyclonal Antibody



CAB13054

Product Information

Size:

20uL, 50uL, 100uL, 200uL

Observed MW:

108kDa

Calculated MW:

92kDa/93kDa/94kDa

Applications:

WB IF

Reactivity:

Human, Mouse

Protein Background

This gene encodes a member of the tetratrico peptide repeat (TPR) family. Mutations of a similar gene in mouse can cause polycystic kidney disease. Two transcript variants encoding distinct isoforms have been identified for this gene.

Immunogen information

Gene ID:

8100

Uniprot

Q13099

Synonyms:

IFT88; D13S1056E; DAF19; TG737; TTC10; hTg737

Antibody Information

Recommended dilutions:

WB 1:500 - 1:2000 IF 1:50 - 1:200

Source:

Rabbit

Isotype:

IgG

Purification:

Affinity purification

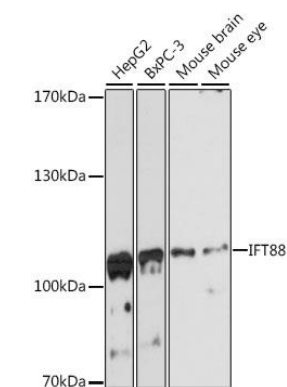
Immunogen:

Recombinant fusion protein containing a sequence corresponding to amino acids 534-833 of human IFT88 (NP_783195.2).

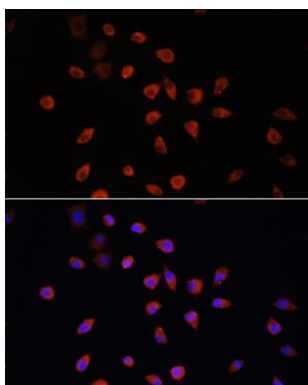
Storage:

Store at -20°C. Avoid freeze / thaw cycles. Buffer: PBS with 0.02% sodium azide, 50% glycerol, pH7.3.

Product Images



Western blot analysis of extracts of various cell lines, using IFT88 antibody (CAB13054) at 1:3000 dilution. Secondary antibody: HRP Goat Anti-Rabbit IgG (H+L) (CABS014) at 1:10000 dilution. Lysates/proteins: 25ug per lane. Blocking buffer: 3% nonfat dry milk in TBST. Detection: ECL Basic Kit (CABM00020). Exposure time: 90s.



Immunofluorescence analysis of L929 cells using IFT88 antibody (CAB13054) at dilution of 1:100. Blue: DAPI for nuclear staining.