

AP3D1 Rabbit Polyclonal Antibody



CAB13058

Product Information

Size:

20uL, 50uL, 100uL, 200uL

Observed MW:

110kDa

Calculated MW:

111kDa/114kDa/125kDa/130kDa/136kDa

Applications:

WB

Reactivity:

Human, Mouse

Antibody Information

Recommended dilutions:

WB 1:500 - 1:2000

Source:

Rabbit

Isotype:

IgG

Purification:

Affinity purification

Protein Background

The protein encoded by this gene is a subunit of the AP3 adaptor-like complex, which is not clathrin-associated, but is associated with the golgi region, as well as more peripheral structures. The AP-3 complex facilitates the budding of vesicles from the golgi membrane, and may be directly involved in trafficking to lysosomes. This subunit is implicated in intracellular biogenesis and trafficking of pigment granules, and possibly platelet dense granules and neurotransmitter vesicles. Defects in this gene are a cause of a new type of Hermansky-Pudlak syndrome.

Immunogen information

Gene ID:

8943

Uniprot

O14617

Synonyms:

AP3D1; ADTD; HPS10; hBLVR

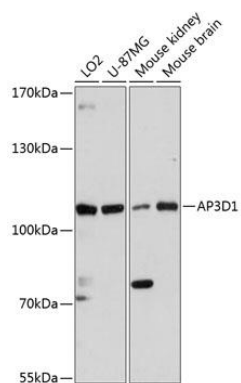
Immunogen:

Recombinant fusion protein containing a sequence corresponding to amino acids 520-700 of human AP3D1 (NP_003929.4).

Storage:

Store at -20°C. Avoid freeze / thaw cycles. Buffer: PBS with 0.02% sodium azide, 50% glycerol, pH7.3.

Product Images



Western blot analysis of extracts of various cell lines, using AP3D1 antibody (CAB13058) at 1:3000 dilution. Secondary antibody: HRP Goat Anti-Rabbit IgG (H+L) (CABS014) at 1:10000 dilution. Lysates/proteins: 25ug per lane. Blocking buffer: 3% nonfat dry milk in TBST. Detection: ECL Basic Kit (CABM00020). Exposure time: 90s.