

MPZL1 Rabbit Polyclonal Antibody



CAB13059

Product Information

Size:

20uL, 50uL, 100uL, 200uL

Observed MW:

16kDa

Calculated MW:

12kDa/15kDa/22kDa/28kDa/
29kDa

Applications:

WB

Reactivity:

Human, Mouse, Rat

Antibody Information

Recommended dilutions:

WB 1:500 - 1:2000

Source:

Rabbit

Isotype:

IgG

Purification:

Affinity purification

Protein Background

Immunogen information

Gene ID:

9019

Uniprot

O95297

Synonyms:

MPZL1; MPZL1b; PZR; PZR1b; PZRa; PZRb

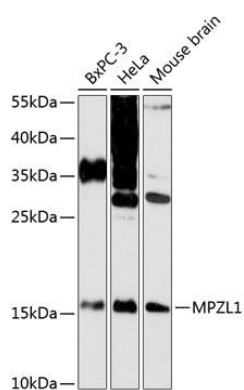
Immunogen:

Recombinant fusion protein containing a sequence corresponding to amino acids 1-269 of human MPZL1 (NP_003944.1).

Storage:

Store at -20°C. Avoid freeze / thaw cycles. Buffer: PBS with 0.02% sodium azide, 50% glycerol, pH7.3.

Product Images



Western blot analysis of extracts of various cell lines, using MPZL1 antibody (CAB13059) at 1:3000 dilution. Secondary antibody: HRP Goat Anti-Rabbit IgG (H+L) (CABS014) at 1:10000 dilution. Lysates/proteins: 25ug per lane. Blocking buffer: 3% nonfat dry milk in TBST. Detection: ECL Enhanced Kit (CABM00021). Exposure time: 90s.