

BDNF Rabbit Polyclonal Antibody



CAB1307

Product Information

Size:

20uL, 50uL, 100uL, 200uL

Observed MW:

14kDa

Calculated MW:

27kDa/28kDa/29kDa/31kDa/
37kDa

Applications:

WB IF

Reactivity:

Human, Mouse, Rat

Antibody Information

Recommended dilutions:

WB 1:500 - 1:2000 IF 1:50 -
1:200

Source:

Rabbit

Isotype:

IgG

Purification:

Affinity purification

Protein Background

This gene encodes a member of the nerve growth factor family of proteins. Alternative splicing results in multiple transcript variants, at least one of which encodes a preproprotein that is proteolytically processed to generate the mature protein. Binding of this protein to its cognate receptor promotes neuronal survival in the adult brain. Expression of this gene is reduced in Alzheimer's, Parkinson's, and Huntington's disease patients. This gene may play a role in the regulation of the stress response and in the biology of mood disorders.

Immunogen information

Gene ID:

627

Uniprot

P23560

Synonyms:

BDNF; ANON2; BULN2

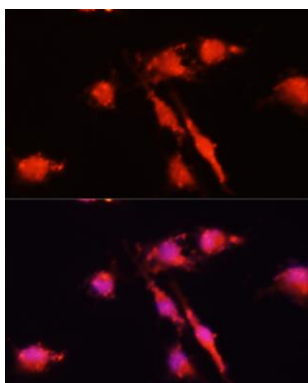
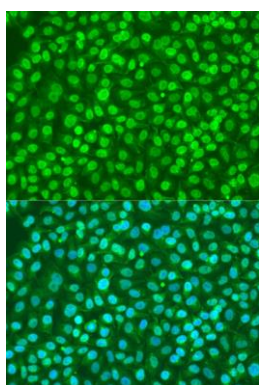
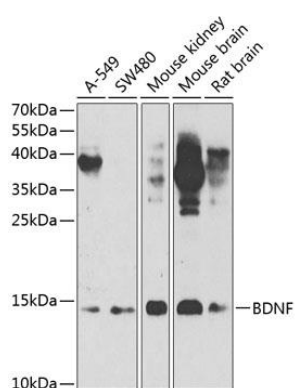
Immunogen:

Recombinant fusion protein containing a sequence corresponding to amino acids 20-247 of human BDNF (NP_733928.1).

Storage:

Store at -20°C. Avoid freeze / thaw cycles. Buffer: PBS with 0.02% sodium azide, 50% glycerol, pH7.3.

Product Images



Western blot analysis of extracts of various cell lines, using BDNF antibody (CAB1307) at 1:1000 dilution. Secondary antibody: HRP Goat Anti-Rabbit IgG (H+L) (CABS014) at 1:10000 dilution. Lysates/proteins: 25ug per lane. Blocking buffer: 3% nonfat dry milk in TBST. Detection: ECL Enhanced Kit (CABM00021). Exposure time: 90s.

Immunofluorescence analysis of U2OS cells using BDNF antibody (CAB1307) at dilution of 1:100. Blue: DAPI for nuclear staining.

Immunofluorescence analysis of U-251MG cells using BDNF antibody (CAB1307) at dilution of 1:100 (40x lens). Blue: DAPI for nuclear staining.