

# GCN1L1 Rabbit Polyclonal Antibody



CAB13075

## Product Information

### Size:

20uL, 50uL, 100uL, 200uL

### Observed MW:

265kDa

### Calculated MW:

292kDa

### Applications:

WB IHC

### Reactivity:

Human

## Antibody Information

### Recommended dilutions:

WB 1:500 - 1:2000 IHC 1:50  
- 1:200

### Source:

Rabbit

### Isotype:

IgG

### Purification:

Affinity purification

## Protein Background

### Immunogen information

#### Gene ID:

10985

#### Uniprot

Q92616

#### Synonyms:

GCN1; GCN1L; GCN1L1; PRIC295

#### Immunogen:

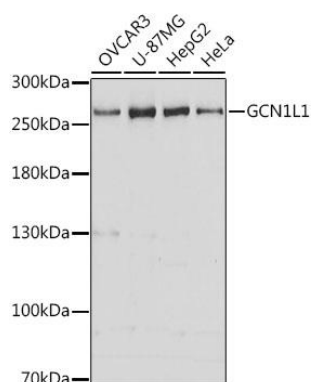
Recombinant fusion protein containing a sequence corresponding to amino acids 2462-2671 of human GCN1L1 (NP\_006827.1).

#### Storage:

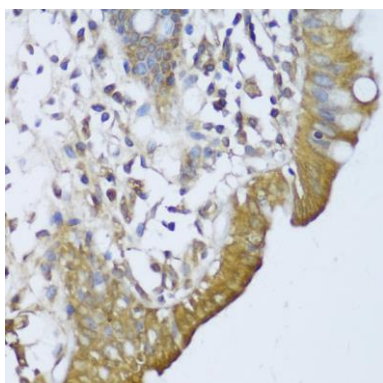
Store at -20°C. Avoid freeze / thaw cycles. Buffer: PBS with 0.02% sodium azide, 50% glycerol, pH7.3.

## Product Images

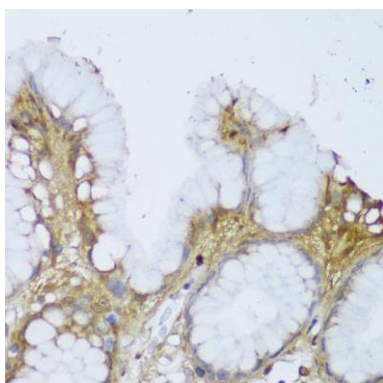
---



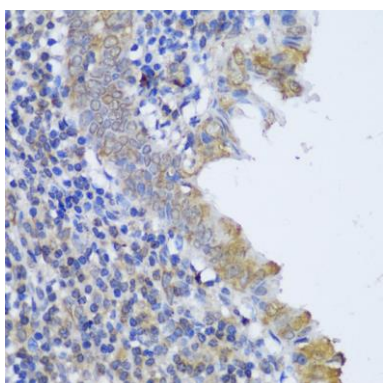
Western blot analysis of extracts of various cell lines, using GCN1L1 antibody (CAB13075) at 1:3000 dilution. Secondary antibody: HRP Goat Anti-Rabbit IgG (H+L) (CABS014) at 1:10000 dilution. Lysates/proteins: 25ug per lane. Blocking buffer: 3% nonfat dry milk in TBST. Detection: ECL Basic Kit (CABM00020). Exposure time: 30s.



Immunohistochemistry of paraffin-embedded human colon using GCN1L1 antibody (CAB13075) at dilution of 1:150 (40x lens).



Immunohistochemistry of paraffin-embedded human stomach using GCN1L1 antibody (CAB13075) at dilution of 1:150 (40x lens).



Immunohistochemistry of paraffin-embedded human appendix using GCN1L1 antibody (CAB13075) at dilution of 1:150 (40x lens).