

# RPRD2 Rabbit Polyclonal Antibody



CAB13079

---

## Product Information

### Size:

20uL, 50uL, 100uL, 200uL

### Observed MW:

156kDa

### Calculated MW:

17kDa/100kDa/152kDa/156kDa

### Applications:

WB

### Reactivity:

Mouse

## Antibody Information

### Recommended dilutions:

WB 1:500 - 1:2000

### Source:

Rabbit

### Isotype:

IgG

### Purification:

Affinity purification

## Protein Background

### Immunogen information

#### Gene ID:

23248

#### Uniprot

Q5VT52

#### Synonyms:

RPRD2; HSPC099; KIAA0460

#### Immunogen:

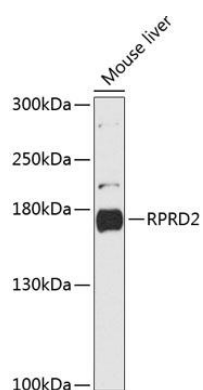
Recombinant fusion protein containing a sequence corresponding to amino acids 1-350 of human RPRD2 (NP\_001284603.1).

#### Storage:

Store at -20°C. Avoid freeze / thaw cycles. Buffer: PBS with 0.02% sodium azide, 50% glycerol, pH7.3.

## Product Images

---



Western blot analysis of extracts of mouse liver, using RPRD2 antibody (CAB13079) at 1:3000 dilution. Secondary antibody: HRP Goat Anti-Rabbit IgG (H+L) (CABS014) at 1:10000 dilution. Lysates/proteins: 25ug per lane. Blocking buffer: 3% nonfat dry milk in TBST. Detection: ECL Basic Kit (CABM00020). Exposure time: 90s.