

VPS39 Rabbit Polyclonal Antibody



CAB13082

Product Information

Size:

20uL, 50uL, 100uL, 200uL

Observed MW:

102kDa

Calculated MW:

100kDa/101kDa

Applications:

WB IF

Reactivity:

Human, Mouse

Protein Background

This gene encodes a protein that may promote clustering and fusion of late endosomes and lysosomes. The protein may also act as an adaptor protein that modulates the transforming growth factor-beta response by coupling the transforming growth factor-beta receptor complex to the Smad pathway. Alternative splicing results in multiple transcript variants.

Immunogen information

Gene ID:

23339

Uniprot

Q96JC1

Synonyms:

VPS39; TLP; VAM6; hVam6p

Antibody Information

Recommended dilutions:

WB 1:500 - 1:2000 IF 1:50 - 1:200

Source:

Rabbit

Isotype:

IgG

Purification:

Affinity purification

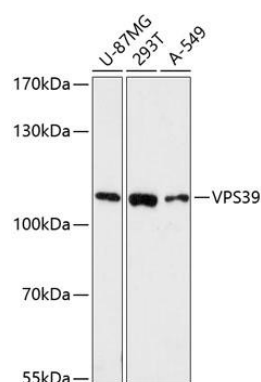
Immunogen:

Recombinant fusion protein containing a sequence corresponding to amino acids 606-875 of human VPS39 (NP_056104.2).

Storage:

Store at -20°C. Avoid freeze / thaw cycles. Buffer: PBS with 0.02% sodium azide, 50% glycerol, pH7.3.

Product Images



Western blot analysis of extracts of various cell lines, using VPS39 antibody (CAB13082) at 1:3000 dilution. Secondary antibody: HRP Goat Anti-Rabbit IgG (H+L) (CABS014) at 1:10000 dilution. Lysates/proteins: 25ug per lane. Blocking buffer: 3% nonfat dry milk in TBST. Detection: ECL Enhanced Kit (CABM00021). Exposure time: 90s.