

SENP1 Rabbit Polyclonal Antibody



CAB13086

Product Information

Size:

20uL, 50uL, 100uL, 200uL

Observed MW:

73kDa

Calculated MW:

73kDa

Applications:

WB IHC

Reactivity:

Human, Mouse, Rat

Protein Background

This gene encodes a cysteine protease that specifically targets members of the small ubiquitin-like modifier (SUMO) protein family. This protease regulates SUMO pathways by deconjugating sumoylated proteins. This protease also functions to process the precursor SUMO proteins into their mature form. Alternate splicing results in multiple transcript variants.

Immunogen information

Gene ID:

29843

Uniprot

Q9P0U3

Synonyms:

SENP1; SuPr-2

Antibody Information

Recommended dilutions:

WB 1:500 - 1:2000 IHC 1:50
- 1:200

Source:

Rabbit

Isotype:

IgG

Purification:

Affinity purification

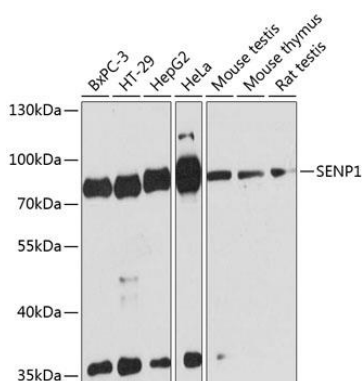
Immunogen:

Recombinant fusion protein containing a sequence corresponding to amino acids 220-420 of human SENP1 (NP_001254523.1).

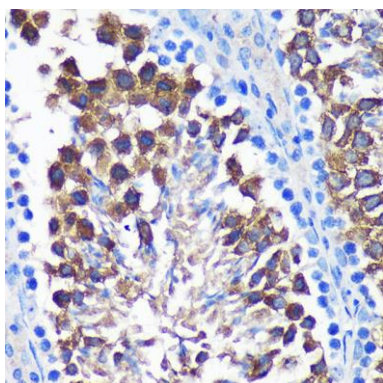
Storage:

Store at -20°C. Avoid freeze / thaw cycles. Buffer: PBS with 0.02% sodium azide, 50% glycerol, pH7.3.

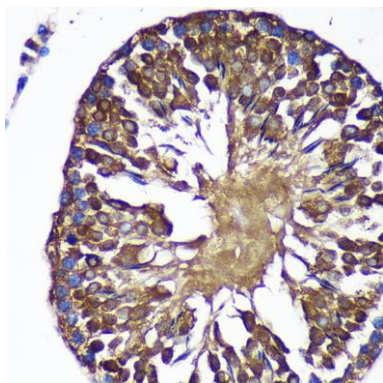
Product Images



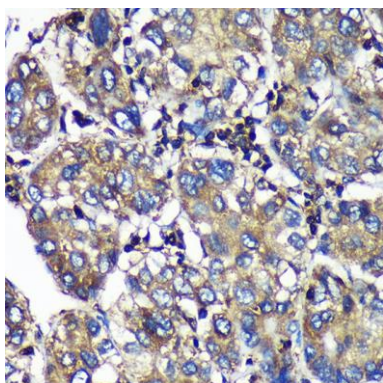
Western blot analysis of extracts of various cell lines, using SENP1 antibody (CAB13086) at 1:3000 dilution. Secondary antibody: HRP Goat Anti-Rabbit IgG (H+L) (CABS014) at 1:10000 dilution. Lysates/proteins: 25ug per lane. Blocking buffer: 3% nonfat dry milk in TBST. Detection: ECL Basic Kit (CABM00020). Exposure time: 90s.



Immunohistochemistry of paraffin-embedded Mouse testis using SENP1 Rabbit pAb (CAB13086) at dilution of 1:100 (40x lens).



Immunohistochemistry of paraffin-embedded Rat testis using SENP1 Rabbit pAb (CAB13086) at dilution of 1:100 (40x lens).



Immunohistochemistry of paraffin-embedded Human liver cancer using SENP1 Rabbit pAb (CAB13086) at dilution of 1:100 (40x lens).