

# A1CF Rabbit Polyclonal Antibody



CAB13087

## Product Information

### Size:

20uL, 50uL, 100uL, 200uL

### Observed MW:

65kDa

### Calculated MW:

55kDa/58kDa/62kDa/64kDa/  
65kDa

### Applications:

WB IHC

### Reactivity:

Human, Mouse, Rat

## Antibody Information

### Recommended dilutions:

WB 1:500 - 1:2000 IHC 1:50  
- 1:200

### Source:

Rabbit

### Isotype:

IgG

### Purification:

Affinity purification

## Protein Background

Mammalian apolipoprotein B mRNA undergoes site-specific C to U deamination, which is mediated by a multi-component enzyme complex containing a minimal core composed of APOBEC-1 and a complementation factor encoded by this gene. The gene product has three non-identical RNA recognition motifs and belongs to the hnRNP R family of RNA-binding proteins. It has been proposed that this complementation factor functions as an RNA-binding subunit and docks APOBEC-1 to deaminate the upstream cytidine. Studies suggest that the protein may also be involved in other RNA editing or RNA processing events. Several transcript variants encoding a few different isoforms have been found for this gene.

## Immunogen information

### Gene ID:

29974

### Uniprot

Q9NQ94

### Synonyms:

A1CF; ACF; ACF64; ACF65; APOBEC1CF; ASP

### Immunogen:

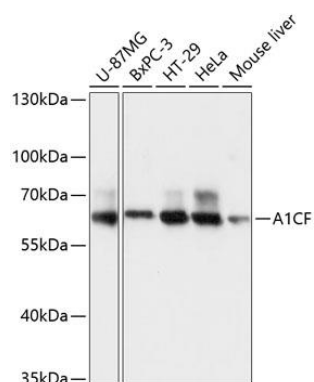
Recombinant fusion protein containing a sequence corresponding to amino acids 50-120 of human A1CF (NP\_055391.2).

### Storage:

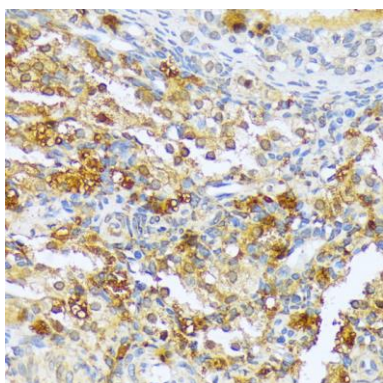
Store at -20°C. Avoid freeze / thaw cycles. Buffer: PBS with 0.02% sodium azide, 50% glycerol, pH7.3.

## Product Images

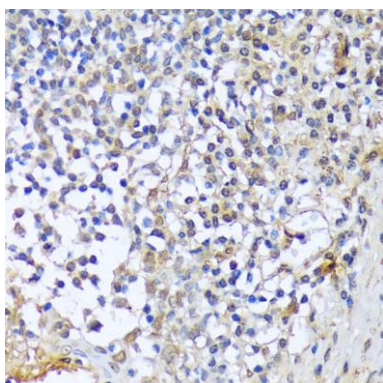
---



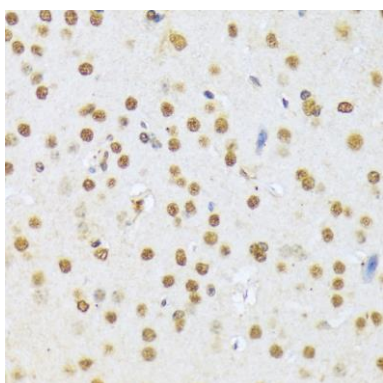
Western blot analysis of extracts of various cell lines, using A1CF antibody (CAB13087) at 1:3000 dilution. Secondary antibody: HRP Goat Anti-Rabbit IgG (H+L) (CABS014) at 1:10000 dilution. Lysates/proteins: 25ug per lane. Blocking buffer: 3% nonfat dry milk in TBST. Detection: ECL Basic Kit (CABM00020). Exposure time: 1s.



Immunohistochemistry of paraffin-embedded rat ovary using A1CF antibody (CAB13087) at dilution of 1:100 (40x lens).



Immunohistochemistry of paraffin-embedded human tonsil using A1CF antibody (CAB13087) at dilution of 1:100 (40x lens).



Immunohistochemistry of paraffin-embedded mouse brain using A1CF antibody (CAB13087) at dilution of 1:100 (40x lens).