

# GKN1 Rabbit Polyclonal Antibody



CAB13107

---

## Product Information

### Size:

20uL, 50uL, 100uL, 200uL

### Observed MW:

22kDa

### Calculated MW:

21kDa

### Applications:

WB

### Reactivity:

Mouse

## Antibody Information

### Recommended dilutions:

WB 1:500 - 1:2000

### Source:

Rabbit

### Isotype:

IgG

### Purification:

Affinity purification

## Protein Background

The protein encoded by this gene is found to be down-regulated in human gastric cancer tissue as compared to normal gastric mucosa.

## Immunogen information

### Gene ID:

56287

### Uniprot

Q9NS71

### Synonyms:

GKN1; AMP18; BRICD1; CA11; FOV; foveolin

### Immunogen:

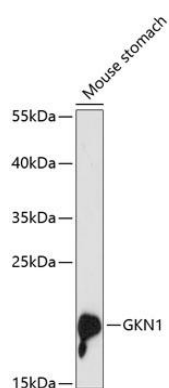
Recombinant fusion protein containing a sequence corresponding to amino acids 25-185 of human GKN1 (NP\_062563.3).

### Storage:

Store at -20°C. Avoid freeze / thaw cycles. Buffer: PBS with 0.02% sodium azide, 50% glycerol, pH7.3.

## Product Images

---



Western blot analysis of extracts of mouse stomach, using GKN1 antibody (CAB13107) at 1:3000 dilution. Secondary antibody: HRP Goat Anti-Rabbit IgG (H+L) (CABS014) at 1:10000 dilution. Lysates/proteins: 25ug per lane. Blocking buffer: 3% nonfat dry milk in TBST. Detection: ECL Basic Kit (CABM00020). Exposure time: 90s.