

# CASC5 Rabbit Polyclonal Antibody



CAB13108

## Product Information

### Size:

20uL, 50uL, 100uL, 200uL

### Observed MW:

300kDa

### Calculated MW:

195kDa/205kDa/262kDa/265kDa

### Applications:

WB IHC IF

### Reactivity:

Human, Rat

## Antibody Information

### Recommended dilutions:

WB 1:500 - 1:2000 IHC 1:50  
- 1:100 IF 1:50 - 1:100

### Source:

Rabbit

### Isotype:

IgG

### Purification:

Affinity purification

## Protein Background

The protein encoded by this gene is a component of the multiprotein assembly that is required for creation of kinetochore-microtubule attachments and chromosome segregation. The encoded protein functions as a scaffold for proteins that influence the spindle assembly checkpoint during the eukaryotic cell cycle and it interacts with at least five different kinetochore proteins and two checkpoint kinases. In adults, this gene is predominantly expressed in normal testes, various cancer cell lines and primary tumors from other tissues and is ubiquitously expressed in fetal tissues. This gene was originally identified as a fusion partner with the mixed-lineage leukemia (MLL) gene in t(11;15)(q23;q14). Mutations in this gene cause autosomal recessive primary microcephaly-4 (MCPH4). Alternative splicing results in multiple transcript variants encoding different isoforms. Additional splice variants have been described but their biological validity has not been confirmed.

## Immunogen information

### Gene ID:

57082

### Uniprot

Q8NG31

### Synonyms:

AF15Q14; CASC5; CT29; D40; MCPH4; PPP1R55; Spc7; hKNL-1;  
hSpc105; KNL1

### Immunogen:

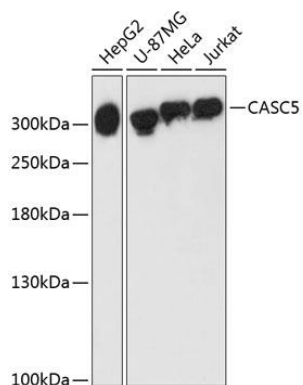
Recombinant fusion protein containing a sequence corresponding to amino acids 1-300 of human CASC5 (NP\_733468.3).

### Storage:

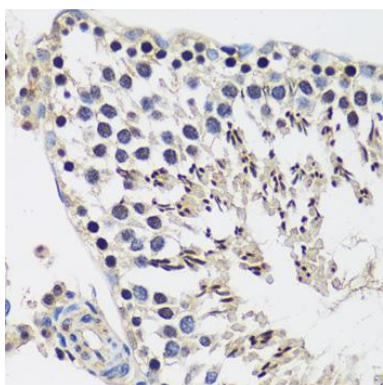
Store at -20°C. Avoid freeze / thaw cycles. Buffer: PBS with 0.02% sodium azide, 50% glycerol, pH7.3.

## Product Images

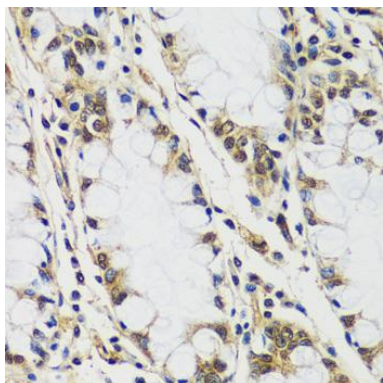
---



Western blot analysis of extracts of various cell lines, using CASC5 antibody (CAB13108) at 1:3000 dilution. Secondary antibody: HRP Goat Anti-Rabbit IgG (H+L) (CABS014) at 1:10000 dilution. Lysates/proteins: 25ug per lane. Blocking buffer: 3% nonfat dry milk in TBST. Detection: ECL Enhanced Kit (CABM00021). Exposure time: 90s.



Immunohistochemistry of paraffin-embedded rat testis using CASC5 antibody (CAB13108) at dilution of 1:100 (40x lens).



Immunohistochemistry of paraffin-embedded human colon using CASC5 antibody (CAB13108) at dilution of 1:100 (40x lens).