

ANO2 Rabbit Polyclonal Antibody



CAB13109

Product Information

Size:

20uL, 50uL, 100uL, 200uL

Observed MW:

114kDa

Calculated MW:

113kDa

Applications:

WB IHC

Reactivity:

Human, Mouse, Rat

Antibody Information

Recommended dilutions:

WB 1:1000 - 1:2000 IHC
1:50 - 1:200

Source:

Rabbit

Isotype:

IgG

Purification:

Affinity purification

Protein Background

Immunogen information

Gene ID:

57101

Uniprot

Q9NQ90

Synonyms:

ANO2; C12orf3; TMEM16B

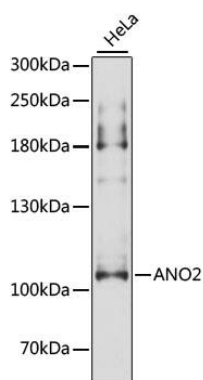
Immunogen:

Recombinant fusion protein containing a sequence corresponding to amino acids 1-200 of human ANO2 (NP_001265526.1).

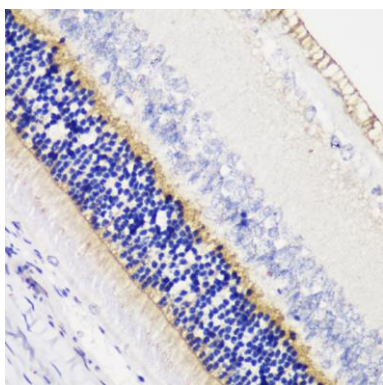
Storage:

Store at -20°C. Avoid freeze / thaw cycles. Buffer: PBS with 0.02% sodium azide, 50% glycerol, pH7.3.

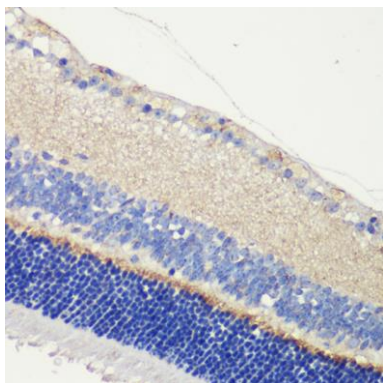
Product Images



Western blot analysis of extracts of HeLa cells, using ANO2 antibody (CAB13109) at 1:3000 dilution. Secondary antibody: HRP Goat Anti-Rabbit IgG (H+L) (CABS014) at 1:10000 dilution. Lysates/proteins: 25ug per lane. Blocking buffer: 3% nonfat dry milk in TBST. Detection: ECL Enhanced Kit (CABM00021). Exposure time: 20s.



Immunohistochemistry of paraffin-embedded rat retina using ANO2 antibody (CAB13109) at dilution of 1:200 (40x lens).



Immunohistochemistry of paraffin-embedded mouse retina using ANO2 antibody (CAB13109) at dilution of 1:200 (40x lens).