

LRRC7 Rabbit Polyclonal Antibody



CAB13114

Product Information

Size:

20uL, 50uL, 100uL, 200uL

Observed MW:

172kDa

Calculated MW:

20kDa/167kDa/172kDa

Applications:

WB IF

Reactivity:

Human, Mouse, Rat

Antibody Information

Recommended dilutions:

WB 1:500 - 1:2000 IF 1:50 - 1:200

Source:

Rabbit

Isotype:

IgG

Purification:

Affinity purification

Protein Background

Immunogen information

Gene ID:

57554

Uniprot

Q96NW7

Synonyms:

LRRC7; DENSIN

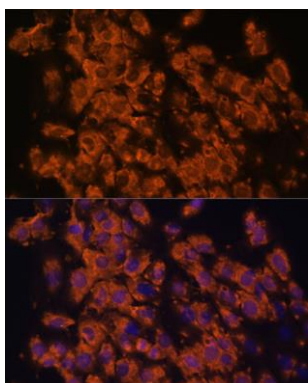
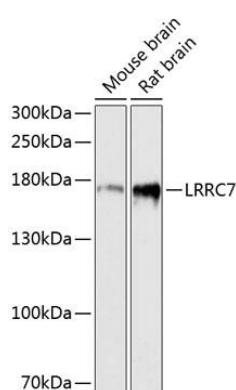
Immunogen:

Recombinant fusion protein containing a sequence corresponding to amino acids 730-890 of human LRRC7 (NP_065845.1).

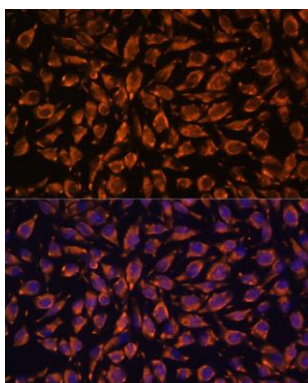
Storage:

Store at -20°C. Avoid freeze / thaw cycles. Buffer: PBS with 0.02% sodium azide, 50% glycerol, pH7.3.

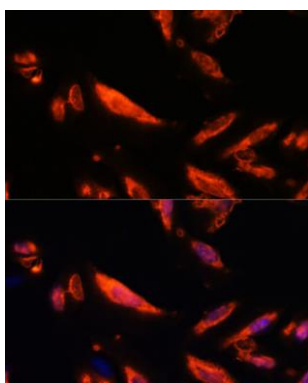
Product Images



Immunofluorescence analysis of C6 cells using LRRC7 antibody (CAB13114) at dilution of 1:100. Blue: DAPI for nuclear staining.



Immunofluorescence analysis of L929 cells using LRRC7 antibody (CAB13114) at dilution of 1:100. Blue: DAPI for nuclear staining.



Immunofluorescence analysis of U-2 OS cells using LRRC7 antibody (CAB13114) at dilution of 1:100. Blue: DAPI for nuclear staining.