

# USP36 Rabbit Polyclonal Antibody



CAB13115

---

## Product Information

### Size:

20uL, 50uL, 100uL, 200uL

### Observed MW:

123kDa

### Calculated MW:

122kDa

### Applications:

WB IF

### Reactivity:

Human, Mouse

## Protein Background

This gene encodes a member of the peptidase C19 or ubiquitin-specific protease family of cysteine proteases. Members of this family remove ubiquitin molecules from polyubiquitinated proteins. The encoded protein may deubiquitinate and stabilize the transcription factor c-Myc, also known as MYC, an important oncoprotein known to be upregulated in most human cancers. The encoded protease may also regulate the activation of autophagy. This gene exhibits elevated expression in some breast and lung cancers.

## Immunogen information

### Gene ID:

57602

### Uniprot

Q9P275

### Synonyms:

USP36; DUB1

## Antibody Information

### Recommended dilutions:

WB 1:500 - 1:2000 IF 1:50 - 1:100

### Source:

Rabbit

### Isotype:

IgG

### Purification:

Affinity purification

### Immunogen:

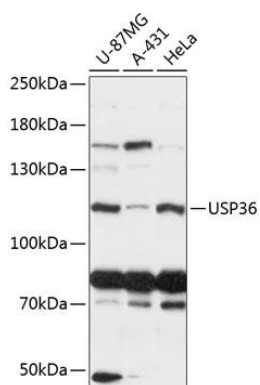
Recombinant fusion protein containing a sequence corresponding to amino acids 1-120 of human USP36 (NP\_079366.3).

### Storage:

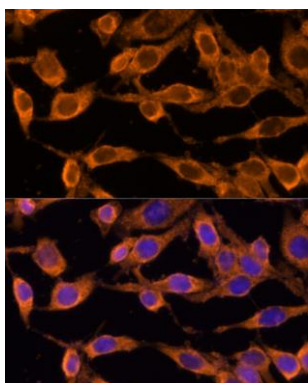
Store at -20°C. Avoid freeze / thaw cycles. Buffer: PBS with 0.02% sodium azide, 50% glycerol, pH7.3.

## Product Images

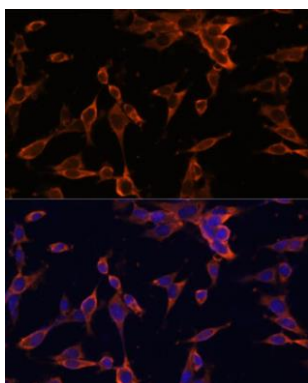
---



Western blot analysis of extracts of various cell lines, using USP36 antibody (CAB13115) at 1:3000 dilution. Secondary antibody: HRP Goat Anti-Rabbit IgG (H+L) (CABS014) at 1:10000 dilution. Lysates/proteins: 25ug per lane. Blocking buffer: 3% nonfat dry milk in TBST. Detection: ECL Basic Kit (CABM00020). Exposure time: 15s.



Immunofluorescence analysis of HeLa cells using USP36 Polyclonal Antibody (CAB13115) at dilution of 1:100 (40x lens). Blue: DAPI for nuclear staining.



Immunofluorescence analysis of NIH-3T3 cells using USP36 Polyclonal Antibody (CAB13115) at dilution of 1:100 (40x lens). Blue: DAPI for nuclear staining.