

NLRC4 Rabbit Polyclonal Antibody



CAB13117

Product Information

Size:

20uL, 50uL, 100uL, 200uL

Observed MW:

102kDa

Calculated MW:

116kDa

Applications:

WB IHC IF

Reactivity:

Human, Mouse

Antibody Information

Recommended dilutions:

WB 1:500 - 1:2000 IHC 1:50
- 1:200 IF 1:50 - 1:200

Source:

Rabbit

Isotype:

IgG

Purification:

Affinity purification

Protein Background

This gene encodes a member of the caspase recruitment domain-containing NLR family. Family members play essential roles in innate immune response to a wide range of pathogenic organisms, tissue damage and other cellular stresses. Mutations in this gene result in autoinflammation with infantile enterocolitis. Alternative splicing results in multiple transcript variants.

Immunogen information

Gene ID:

268973

Uniprot

Q9NPP4

Synonyms:

NLRC4; AIFEC; CARD12; CLAN; CLAN1; CLANA; CLANB; CLANC;
CLAND; CLR2.1; FCAS4; IPAF

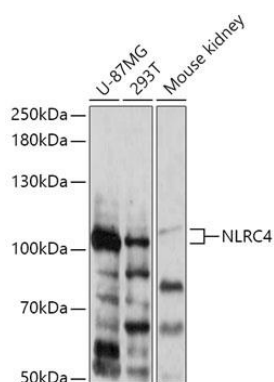
Immunogen:

Recombinant fusion protein containing a sequence corresponding to amino acids 89-159 of mouse NLRC4 (NP_001028539.1).

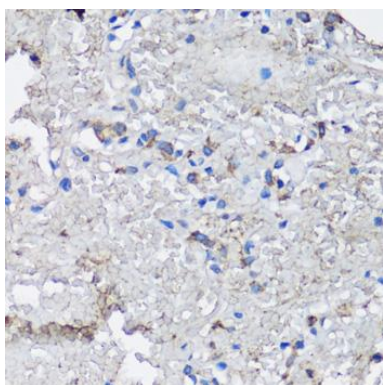
Storage:

Store at -20°C. Avoid freeze / thaw cycles. Buffer: PBS with 0.02% sodium azide, 50% glycerol, pH7.3.

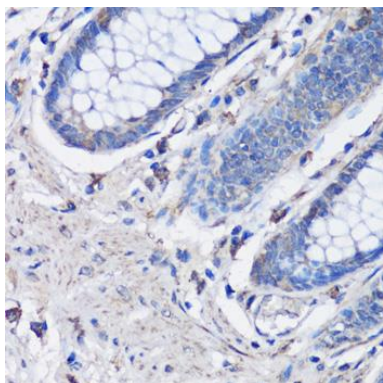
Product Images



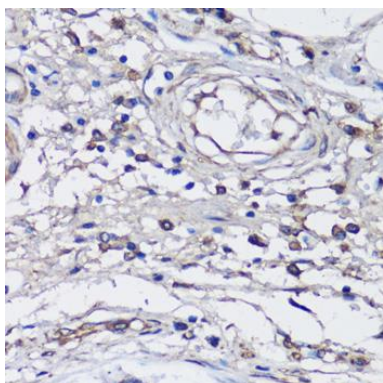
Western blot analysis of extracts of various cell lines, using NLRC4 antibody (CAB13117) at 1:1000 dilution. Secondary antibody: HRP Goat Anti-Rabbit IgG (H+L) (CABS014) at 1:10000 dilution. Lysates/proteins: 25ug per lane. Blocking buffer: 3% nonfat dry milk in TBST. Detection: ECL Basic Kit (CABM00020). Exposure time: 120s.



Immunohistochemistry of paraffin-embedded human lung using NLRC4 antibody (CAB13117) at dilution of 1:100 (40x lens).



Immunohistochemistry of paraffin-embedded human colon using NLRC4 antibody (CAB13117) at dilution of 1:100 (40x lens).



Immunohistochemistry of paraffin-embedded human gastric cancer using NLRC4 antibody (CAB13117) at dilution of 1:100 (40x lens).