

# RBM26 Rabbit Polyclonal Antibody



CAB13120

## Product Information

### Size:

20uL, 50uL, 100uL, 200uL

### Observed MW:

113kDa

### Calculated MW:

13kDa/60kDa/62kDa/110kDa  
/111kDa/113kDa

### Applications:

WB

### Reactivity:

Mouse, Rat

## Antibody Information

### Recommended dilutions:

WB 1:500 - 1:2000

### Source:

Rabbit

### Isotype:

IgG

### Purification:

Affinity purification

## Protein Background

### Immunogen information

#### Gene ID:

64062

#### Uniprot

Q5T8P6

#### Synonyms:

RBM26; ARRS2; C13orf10; PPP1R132; PRO1777; SE70-2; ZC3H17

#### Immunogen:

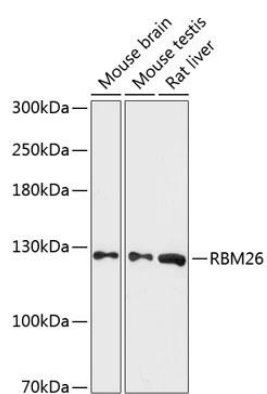
Recombinant fusion protein containing a sequence corresponding to amino acids 65-140 of human RBM26 (NP\_071401.3).

#### Storage:

Store at -20°C. Avoid freeze / thaw cycles. Buffer: PBS with 0.02% sodium azide, 50% glycerol, pH7.3.

## Product Images

---



Western blot analysis of extracts of various cell lines, using RBM26 antibody (CAB13120) at 1:3000 dilution. Secondary antibody: HRP Goat Anti-Rabbit IgG (H+L) (CABS014) at 1:10000 dilution. Lysates/proteins: 25ug per lane. Blocking buffer: 3% nonfat dry milk in TBST. Detection: ECL Basic Kit (CABM00020). Exposure time: 90s.