

# MTMR9 Rabbit Polyclonal Antibody



CAB13124

---

## Product Information

### Size:

20uL, 50uL, 100uL, 200uL

### Observed MW:

63kDa

### Calculated MW:

53kDa/63kDa

### Applications:

WB IHC IF

### Reactivity:

Human, Mouse, Rat

## Protein Background

This gene encodes a myotubularin-related protein that is atypical to most other members of the myotubularin-related protein family because it has no dual-specificity phosphatase domain. The encoded protein contains a double-helical motif similar to the SET interaction domain, which is thought to have a role in the control of cell proliferation. In mouse, a protein similar to the encoded protein binds with MTMR7, and together they dephosphorylate phosphatidylinositol 3-phosphate and inositol 1, 3-bisphosphate.

## Immunogen information

### Gene ID:

66036

### Uniprot

Q96QG7

### Synonyms:

MTMR9; C8orf9; LIP-STYX; MTMR8

## Antibody Information

### Recommended dilutions:

WB 1:1000 - 1:2000 IHC  
1:50 - 1:200 IF 1:50 - 1:200

### Source:

Rabbit

### Isotype:

IgG

### Purification:

Affinity purification

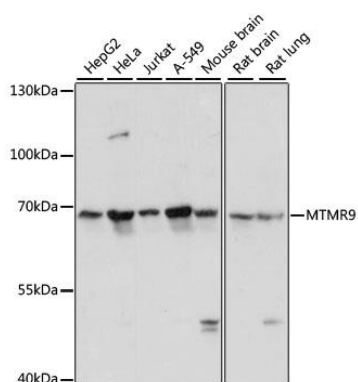
### Immunogen:

Recombinant fusion protein containing a sequence corresponding to amino acids 1-250 of human MTMR9 (NP\_056273.2).

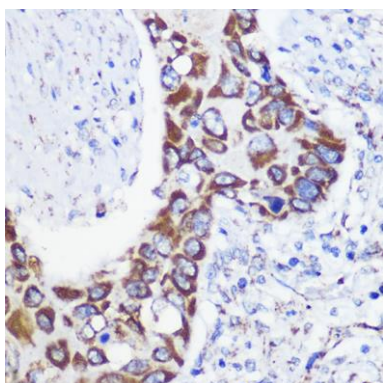
### Storage:

Store at -20°C. Avoid freeze / thaw cycles. Buffer: PBS with 0.02% sodium azide, 50% glycerol, pH7.3.

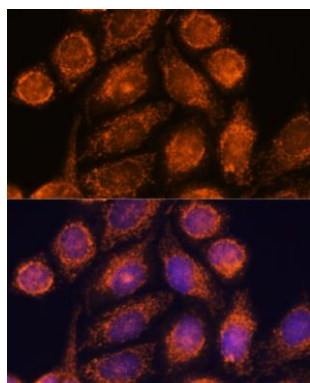
## Product Images



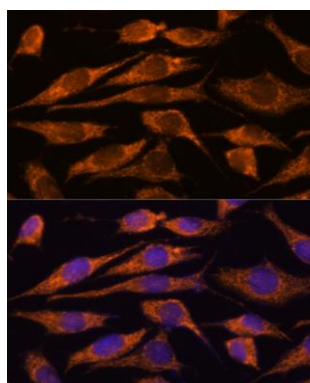
Western blot analysis of extracts of various cell lines, using MTMR9 antibody (CAB13124) at 1:3000 dilution. Secondary antibody: HRP Goat Anti-Rabbit IgG (H+L) (CABS014) at 1:10000 dilution. Lysates/proteins: 25ug per lane. Blocking buffer: 3% nonfat dry milk in TBST. Detection: ECL Basic Kit (CABM00020). Exposure time: 10s.



Immunohistochemistry of paraffin-embedded Human lung cancer using MTMR9 Rabbit pAb (CAB13124) at dilution of 1:100 (40x lens).



Immunofluorescence analysis of HeLa cells using MTMR9 antibody (CAB13124) at dilution of 1:100. Blue: DAPI for nuclear staining.



Immunofluorescence analysis of L929 cells using MTMR9 antibody (CAB13124) at dilution of 1:100. Blue: DAPI for nuclear staining.