

# DYNC2H1 Rabbit Polyclonal Antibody



CAB13126

## Product Information

### Size:

20uL, 50uL, 100uL, 200uL

### Observed MW:

492kDa

### Calculated MW:

105kDa/492kDa/493kDa

### Applications:

WB

### Reactivity:

Rat

## Antibody Information

### Recommended dilutions:

WB 1:500 - 1:2000

### Source:

Rabbit

### Isotype:

IgG

### Purification:

Affinity purification

## Protein Background

This gene encodes a large cytoplasmic dynein protein that is involved in retrograde transport in the cilium and has a role in intraflagellar transport, a process required for ciliary/flagellar assembly. Mutations in this gene cause a heterogeneous spectrum of conditions related to altered primary cilium function and often involve polydactyly, abnormal skeletogenesis, and polycystic kidneys. Alternative splicing results in multiple transcript variants encoding distinct proteins.

## Immunogen information

### Gene ID:

79659

### Uniprot

Q8NCM8

### Synonyms:

DYNC2H1; ATD3; DHC1b; DHC2; DNCH2; DYH1B; SRPS2B; SRTD3; hdhc11

### Immunogen:

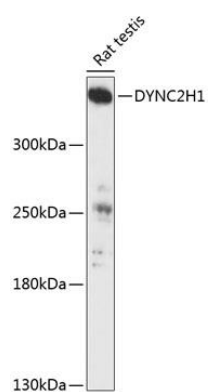
Recombinant fusion protein containing a sequence corresponding to amino acids 1-250 of human DYNC2H1 (NP\_001073932.1).

### Storage:

Store at -20°C. Avoid freeze / thaw cycles. Buffer: PBS with 0.02% sodium azide, 50% glycerol, pH7.3.

## Product Images

---



Western blot analysis of extracts of rat testis, using DYNC2H1 antibody (CAB13126) at 1:3000 dilution. Secondary antibody: HRP Goat Anti-Rabbit IgG (H+L) (CABS014) at 1:10000 dilution. Lysates/proteins: 25ug per lane. Blocking buffer: 3% nonfat dry milk in TBST. Detection: ECL Enhanced Kit (CABM00021). Exposure time: 30s.