

NME1-NME2 Rabbit Polyclonal Antibody



CAB13145

Product Information

Size:

20uL, 50uL, 100uL, 200uL

Observed MW:

17kDa

Calculated MW:

22kDa

Applications:

WB

Reactivity:

Human, Mouse, Rat

Protein Background

This locus represents naturally occurring read-through transcription between the neighboring NME1 and NME2 genes. The significance of this read-through transcription and the function of the resulting protein product have not yet been determined. Alternative splicing of this gene results in multiple transcript variants.

Immunogen information

Gene ID:

654364

Uniprot

Synonyms:

NME1-NME2; NM23-LV; NMELV

Antibody Information

Recommended dilutions:

WB 1:500 - 1:2000

Source:

Rabbit

Isotype:

IgG

Purification:

Affinity purification

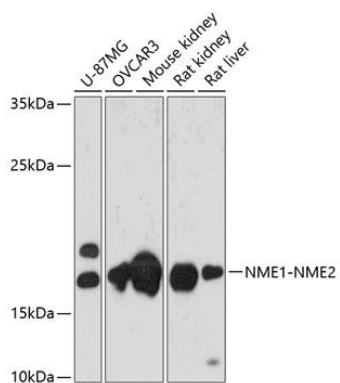
Immunogen:

Recombinant fusion protein containing a sequence corresponding to amino acids 1-267 of human NME1-NME2 (NP_001018146.1).

Storage:

Store at -20°C. Avoid freeze / thaw cycles. Buffer: PBS with 0.02% sodium azide, 50% glycerol, pH7.3.

Product Images



Western blot analysis of extracts of various cell lines, using NME1-NME2 antibody (CAB13145) at 1:3000 dilution. Secondary antibody: HRP Goat Anti-Rabbit IgG (H+L) (CABS014) at 1:10000 dilution. Lysates/proteins: 25ug per lane. Blocking buffer: 3% nonfat dry milk in TBST. Detection: ECL Basic Kit (CABM00020). Exposure time: 30s.