

# USE1 Rabbit Polyclonal Antibody



CAB13151

---

## Product Information

### Size:

20uL, 50uL, 100uL, 200uL

### Observed MW:

29kDa

### Calculated MW:

15kDa/16kDa/29kDa

### Applications:

WB IF

### Reactivity:

Human, Mouse

## Antibody Information

### Recommended dilutions:

WB 1:1000 - 1:2000 IF 1:50  
- 1:200

### Source:

Rabbit

### Isotype:

IgG

### Purification:

Affinity purification

## Protein Background

### Immunogen information

#### Gene ID:

55850

#### Uniprot

Q9NZ43

#### Synonyms:

USE1; D12; MDS032; P31; SLT1

#### Immunogen:

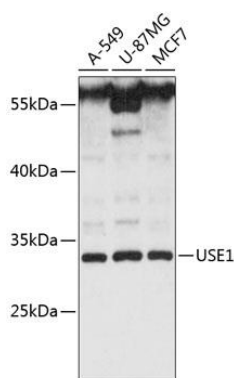
Recombinant fusion protein containing a sequence corresponding to amino acids 1-259 of human USE1 (NP\_060937.1).

#### Storage:

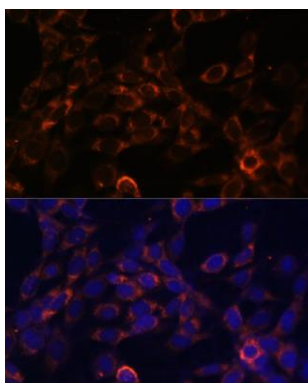
Store at -20°C. Avoid freeze / thaw cycles. Buffer: PBS with 0.02% sodium azide, 50% glycerol, pH7.3.

## Product Images

---



Western blot analysis of extracts of various cell lines, using USE1 antibody (CAB13151) at 1:3000 dilution. Secondary antibody: HRP Goat Anti-Rabbit IgG (H+L) (CABS014) at 1:10000 dilution. Lysates/proteins: 25ug per lane. Blocking buffer: 3% nonfat dry milk in TBST. Detection: ECL Basic Kit (CABM00020). Exposure time: 30s.



Immunofluorescence analysis of NIH-3T3 cells using USE1 Polyclonal Antibody (CAB13151) at dilution of 1:100 (40x lens). Blue: DAPI for nuclear staining.