

RBM14 Rabbit Polyclonal Antibody



CAB13159

Product Information

Size:

20uL, 50uL, 100uL, 200uL

Observed MW:

69kDa

Calculated MW:

12kDa/13kDa/17kDa/37kDa/
69kDa

Applications:

WB

Reactivity:

Mouse, Rat

Antibody Information

Recommended dilutions:

WB 1:500 - 1:2000

Source:

Rabbit

Isotype:

IgG

Purification:

Affinity purification

Protein Background

This gene encodes a ribonucleoprotein that functions as a general nuclear coactivator, and an RNA splicing modulator. This protein contains two RNA recognition motifs (RRM) at the N-terminus, and multiple hexapeptide repeat domain at the C-terminus that interacts with thyroid hormone receptor-binding protein (TRBP), and is required for transcription activation. Alternatively spliced transcript variants encoding different isoforms (with opposing effects on transcription) have been described for this gene.

Immunogen information

Gene ID:

10432

Uniprot

Q96PK6

Synonyms:

RBM14; COAA; PSP2; SIP; SYTIP1; TMEM137

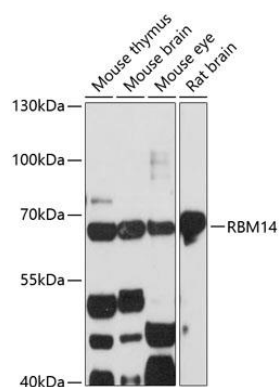
Immunogen:

A synthetic peptide corresponding to a sequence within amino acids 500-600 of human RBM14 (NP_006319.1).

Storage:

Store at -20°C. Avoid freeze / thaw cycles. Buffer: PBS with 0.02% sodium azide, 50% glycerol, pH7.3.

Product Images



Western blot analysis of extracts of various cell lines, using RBM14 antibody (CAB13159) at 1:3000 dilution. Secondary antibody: HRP Goat Anti-Rabbit IgG (H+L) (CABS014) at 1:10000 dilution. Lysates/proteins: 25ug per lane. Blocking buffer: 3% nonfat dry milk in TBST. Detection: ECL Basic Kit (CABM00020). Exposure time: 30s.