

ZNF581 Rabbit Polyclonal Antibody



CAB13162

Product Information

Size:

20uL, 50uL, 100uL, 200uL

Observed MW:

22-24kDa

Calculated MW:

22kDa

Applications:

WB IHC IF

Reactivity:

Human, Mouse, Rat

Antibody Information

Recommended dilutions:

WB 1:1000 - 1:2000 IHC
1:50 - 1:200 IF 1:50 - 1:200

Source:

Rabbit

Isotype:

IgG

Purification:

Affinity purification

Protein Background

Immunogen information

Gene ID:

51545

Uniprot

Q9P0T4

Synonyms:

ZNF581; HSPC189

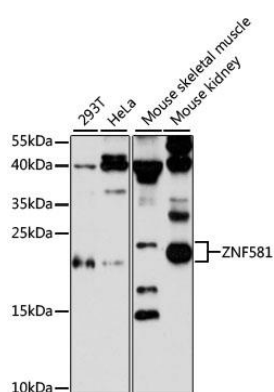
Immunogen:

Recombinant fusion protein containing a sequence corresponding to amino acids 1-90 of human ZNF581 (NP_057619.1).

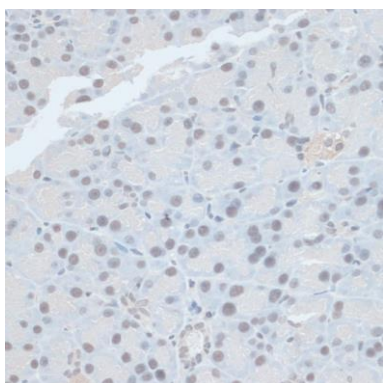
Storage:

Store at -20°C. Avoid freeze / thaw cycles. Buffer: PBS with 0.02% sodium azide, 50% glycerol, pH7.3.

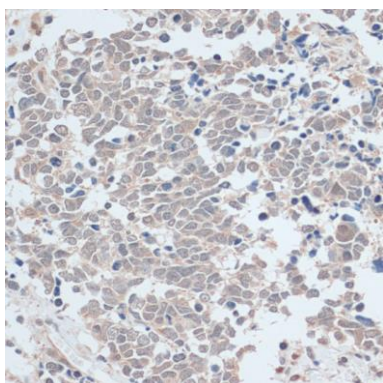
Product Images



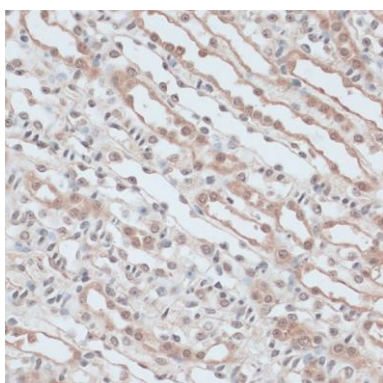
Western blot analysis of extracts of various cell lines, using ZNF581 antibody (CAB13162) at 1:3000 dilution. Secondary antibody: HRP Goat Anti-Rabbit IgG (H+L) (CABS014) at 1:10000 dilution. Lysates/proteins: 25ug per lane. Blocking buffer: 3% nonfat dry milk in TBST. Detection: ECL Enhanced Kit (CABM00021). Exposure time: 90s.



Immunohistochemistry of paraffin-embedded rat pancreas using ZNF581 antibody (CAB13162) at dilution of 1:100 (40x lens).



Immunohistochemistry of paraffin-embedded human lung cancer using ZNF581 antibody (CAB13162) at dilution of 1:100 (40x lens).



Immunohistochemistry of paraffin-embedded mouse kidney using ZNF581 antibody (CAB13162) at dilution of 1:100 (40x lens).