

RD3 Rabbit Polyclonal Antibody



CAB13165

Product Information

Size:

20uL, 50uL, 100uL, 200uL

Observed MW:

26kDa

Calculated MW:

22kDa

Applications:

WB

Reactivity:

Mouse, Rat

Protein Background

This gene encodes a retinal protein that is associated with promyelocytic leukemia-gene product (PML) bodies in the nucleus. Mutations in this gene cause Leber congenital amaurosis type 12, a disease that results in retinal degeneration. Alternative splicing results in multiple transcript variants.

Immunogen information

Gene ID:

343035

Uniprot

Q7Z3Z2

Synonyms:

RD3; C1orf36; LCA12

Antibody Information

Recommended dilutions:

WB 1:500 - 1:1000

Source:

Rabbit

Isotype:

IgG

Purification:

Affinity purification

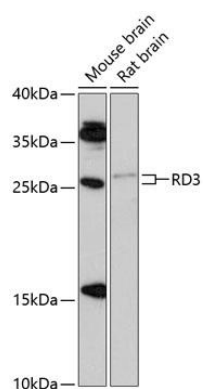
Immunogen:

Recombinant fusion protein containing a sequence corresponding to amino acids 1-195 of human RD3 (NP_898882.1).

Storage:

Store at -20°C. Avoid freeze / thaw cycles. Buffer: PBS with 0.02% sodium azide, 50% glycerol, pH7.3.

Product Images



Western blot analysis of extracts of various cell lines, using RD3 antibody (CAB13165) at 1:1000 dilution. Secondary antibody: HRP Goat Anti-Rabbit IgG (H+L) (CABS014) at 1:10000 dilution. Lysates/proteins: 25ug per lane. Blocking buffer: 3% nonfat dry milk in TBST. Detection: ECL Enhanced Kit (CABM00021). Exposure time: 90s.